



I22R2 Monoclonal Antibody

Catalog No	BYmab-06624
Isotype	IgG
Reactivity	Human;Rat;Mouse;
Applications	WB
Gene Name	IL22RA2 UNQ5793/PRO19598/PRO19822
Protein Name	Interleukin-22 receptor subunit alpha-2 (IL-22 receptor subunit alpha-2) (IL-22R-alpha-2) (IL-22RA2) (Cytokine receptor class-II member 10) (Cytokine receptor family 2 member 10) (CRF2-10) (Cytokine r
Immunogen	Synthesized peptide derived from part region of human protein
Specificity	I22R2 Monoclonal Antibody detects endogenous levels of protein.
Formulation	Liquid in PBS containing 50% glycerol, and 0.02% sodium azide.
Source	Monoclonal, Mouse,IgG
Purification	The antibody was affinity-purified from mouse antiserum by affinity-chromatography using epitope-specific immunogen.
Dilution	WB 1:500-2000
Concentration	1 mg/ml
Purity	≥90%
Storage Stability	-20°C/1 year
Synonyms	
Observed Band	28kD
Cell Pathway	Secreted .
Tissue Specificity	Expressed in placenta, spleen, breast, skin and lung. Also detected in intestinal tract, testis, brain, heart and thymus. No expression found in prostate, bladder, kidney, ovary, muscle, bone marrow, liver and uterus. Isoform 1 is expressed only in placenta. Isoform 2 is expressed in placenta and breast and at lower level in spleen, skin, thymus and stomach.
Function	function:Isoform 2 is a receptor for IL22. Binds to IL22, prevents interaction with the functional IL-22R complex and blocks the activity of IL22 (in vitro). May play an important role as an IL22 antagonist in the regulation of inflammatory responses. Isoform 1 may play a role in establishing and maintaining successful pregnancy.,similarity:Belongs to the type II cytokine receptor family.,similarity:Contains 3 fibronectin type-III domains.,tissue specificity:Expressed in placenta, spleen, breast, skin and lung. Also detected in

Nanjing BYabscience technology Co.,Ltd



intestinal tract, testis, brain, heart and thymus. No expression found in prostate, bladder, kidney, ovary, muscle, bone marrow, liver and uterus. Isoform 1 is expressed only in placenta. Isoform 2 is expressed in placenta and breast and at lower level in spleen, skin, thymus and stomach.,

Background

This gene encodes a member of the class II cytokine receptor family. The encoded soluble protein specifically binds to and inhibits interleukin 22 activity by blocking the interaction of interleukin 22 with its cell surface receptor. The encoded protein may be important in the regulation of inflammatory response, and has been implicated in the regulation of tumorigenesis in the colon. Alternative splicing results in multiple transcript variants encoding distinct isoforms. [provided by RefSeq, Jul 2013],

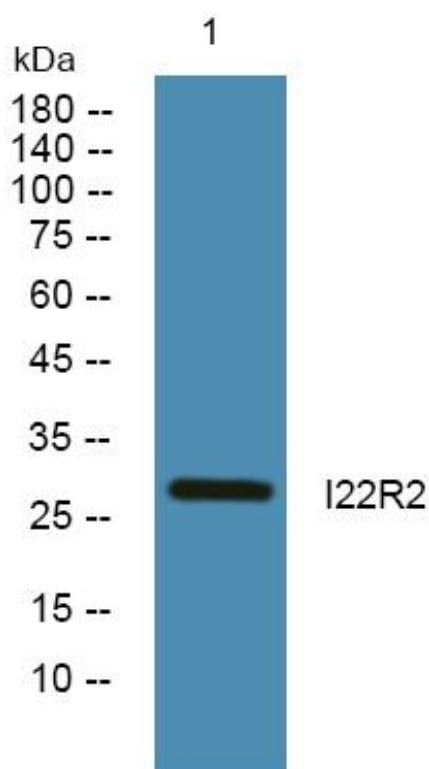
matters needing attention

Avoid repeated freezing and thawing!

Usage suggestions

This product can be used in immunological reaction related experiments. For more information, please consult technical personnel.

Products Images



Western Blot analysis of various cells using I22R2 Monoclonal Antibody