



# FBF1 Monoclonal Antibody

Catalog No	BYmab-06608
Isotype	IgG
Reactivity	Human;Mouse
Applications	WB
Gene Name	FBF1 ALB KIAA1863
Protein Name	Fas-binding factor 1 (FBF-1) (Protein albatross)
Immunogen	Synthesized peptide derived from human protein . at AA range: 730-810
Specificity	FBF1 Monoclonal Antibody detects endogenous levels of protein.
Formulation	Liquid in PBS containing 50% glycerol, and 0.02% sodium azide.
Source	Monoclonal, Mouse,IgG
Purification	The antibody was affinity-purified from mouse antiserum by affinity-chromatography using epitope-specific immunogen.
Dilution	WB 1:500-2000
Concentration	1 mg/ml
Purity	≥90%
Storage Stability	-20°C/1 year
Synonyms	
Observed Band	124kD
Cell Pathway	Cytoplasm, cytoskeleton, microtubule organizing center, centrosome, centriole. Cytoplasm, cytoskeleton, spindle pole. Cell junction. Localizes specifically to the distal appendage region of the centriole, which anchors the mother centriole to the plasma membrane. Localizes to the apical junction complex (AJC) in epithelial cells.
Tissue Specificity	Present in various epithelial cells (at protein level).
Function	caution:The sequence shown here is derived from an Ensembl automatic analysis pipeline and should be considered as preliminary data.,subunit:May interact with FAS cytoplasmic domain.,
Background	caution:The sequence shown here is derived from an Ensembl automatic analysis pipeline and should be considered as preliminary data.,subunit:May interact with FAS cytoplasmic domain.,

Nanjing BYabscience technology Co.,Ltd

网址: [www.njbybio.com](http://www.njbybio.com)

官方热线: 025-5229-8998

监督电话: 15950492658



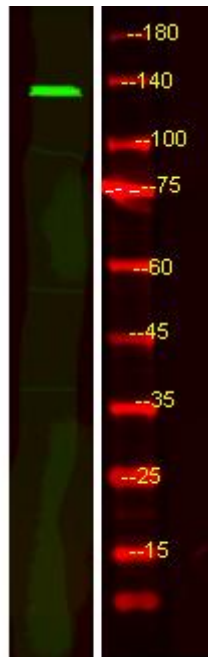
**matters needing attention**

Avoid repeated freezing and thawing!

**Usage suggestions**

This product can be used in immunological reaction related experiments. For more information, please consult technical personnel.

## Products Images



Western Blot analysis of various cells using FBF1 Monoclonal Antibody