



# CY24A Monoclonal Antibody

<b>Catalog No</b>	BYmab-06600
<b>Isotype</b>	IgG
<b>Reactivity</b>	Human;Rat;Mouse;
<b>Applications</b>	WB
<b>Gene Name</b>	CYBA
<b>Protein Name</b>	Cytochrome b-245 light chain (Cytochrome b(558) alpha chain) (Cytochrome b558 subunit alpha) (Neutrophil cytochrome b 22 kDa polypeptide) (Superoxide-generating NADPH oxidase light chain subunit) (p22)
<b>Immunogen</b>	Synthesized peptide derived from human protein . at AA range: 80-160
<b>Specificity</b>	CY24A Monoclonal Antibody detects endogenous levels of protein.
<b>Formulation</b>	Liquid in PBS containing 50% glycerol, and 0.02% sodium azide.
<b>Source</b>	Monoclonal, Mouse,IgG
<b>Purification</b>	The antibody was affinity-purified from mouse antiserum by affinity-chromatography using epitope-specific immunogen.
<b>Dilution</b>	WB 1:500-2000
<b>Concentration</b>	1 mg/ml
<b>Purity</b>	≥90%
<b>Storage Stability</b>	-20°C/1 year
<b>Synonyms</b>	
<b>Observed Band</b>	21kD
<b>Cell Pathway</b>	Cell membrane . As unassembled monomer may localize to the endoplasmic reticulum. .
<b>Tissue Specificity</b>	Brain,
<b>Function</b>	disease:Defects in CYBA are a cause of chronic granulomatous disease autosomal recessive cytochrome-b-negative (ARCGD) [MIM:233690]. Chronic granulomatous disease is a genetically heterogeneous disorder characterized by the inability of neutrophils and phagocytes to kill microbes that they have ingested. Patients suffer from life-threatening bacterial/fungal infections.,function:Critical component of the membrane-bound oxidase of phagocytes that generates superoxide. Associates with NOX3 to form a functional NADPH oxidase constitutively generating superoxide.,miscellaneous:The heme prosthetic group could be coordinated with residues of the light chain, the heavy chain, or both, and it is possible that more than one heme is present per

**Nanjing BYabscience technology Co.,Ltd**



cytochrome b-245.,online information:CYBA mutation db,online information:The Singapore human mutation and polymorphism database,similarity:Belongs to the p

#### Background

Cytochrome b is comprised of a light chain (alpha) and a heavy chain (beta). This gene encodes the light, alpha subunit which has been proposed as a primary component of the microbicidal oxidase system of phagocytes. Mutations in this gene are associated with autosomal recessive chronic granulomatous disease (CGD), that is characterized by the failure of activated phagocytes to generate superoxide, which is important for the microbicidal activity of these cells. [provided by RefSeq, Jul 2008],

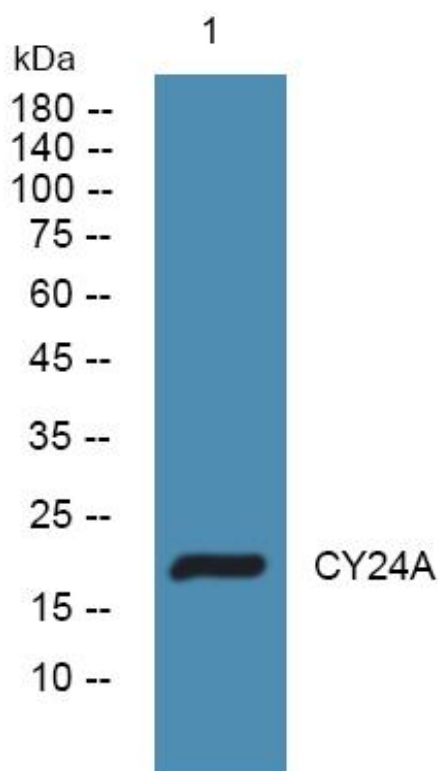
#### matters needing attention

Avoid repeated freezing and thawing!

#### Usage suggestions

This product can be used in immunological reaction related experiments. For more information, please consult technical personnel.

## Products Images



Western Blot analysis of various cells using CY24A Monoclonal Antibody