



# CX6A2 Monoclonal Antibody

Catalog No	BYmab-06599
Isotype	IgG
Reactivity	Human;Rat;Mouse;
Applications	WB
Gene Name	COX6A2 COX6A COX6AH
Protein Name	Cytochrome c oxidase subunit 6A2, mitochondrial (Cytochrome c oxidase polypeptide VIa-heart) (COXVIaH) (Cytochrome c oxidase subunit VIa-muscle) (COX VIa-M)
Immunogen	Synthesized peptide derived from human protein . at AA range: 10-90
Specificity	CX6A2 Monoclonal Antibody detects endogenous levels of protein.
Formulation	Liquid in PBS containing 50% glycerol, and 0.02% sodium azide.
Source	Monoclonal, Mouse,IgG
Purification	The antibody was affinity-purified from mouse antiserum by affinity-chromatography using epitope-specific immunogen.
Dilution	WB 1:500-2000
Concentration	1 mg/ml
Purity	≥90%
Storage Stability	-20°C/1 year
Synonyms	
Observed Band	10kD
Cell Pathway	Mitochondrion inner membrane ; Single-pass membrane protein .
Tissue Specificity	Expressed specifically in heart and muscle (PubMed:31155743). Not detected in brain, colon, spleen, kidney, liver, lung and pancreas (PubMed:31155743).
Function	function:This protein is one of the nuclear-coded polypeptide chains of cytochrome c oxidase, the terminal oxidase in mitochondrial electron transport.,similarity:Belongs to the cytochrome c oxidase subunit 6A family.,tissue specificity:Heart/muscle specific isoform.,
Background	Cytochrome c oxidase (COX), the terminal enzyme of the mitochondrial respiratory chain, catalyzes the electron transfer from reduced cytochrome c to oxygen. It is a heteromeric complex consisting of 3 catalytic subunits encoded by mitochondrial genes and multiple structural subunits encoded by nuclear genes. The mitochondrially-encoded subunits function in electron transfer, and the nuclear-encoded subunits may be involved in the regulation and assembly of the

Nanjing BYabscience technology Co.,Ltd



complex. This nuclear gene encodes polypeptide 2 (heart/muscle isoform) of subunit VIa, and polypeptide 2 is present only in striated muscles. Polypeptide 1 (liver isoform) of subunit VIa is encoded by a different gene, and is found in all non-muscle tissues. These two polypeptides share 66% amino acid sequence identity. [provided by RefSeq, Jul 2008],

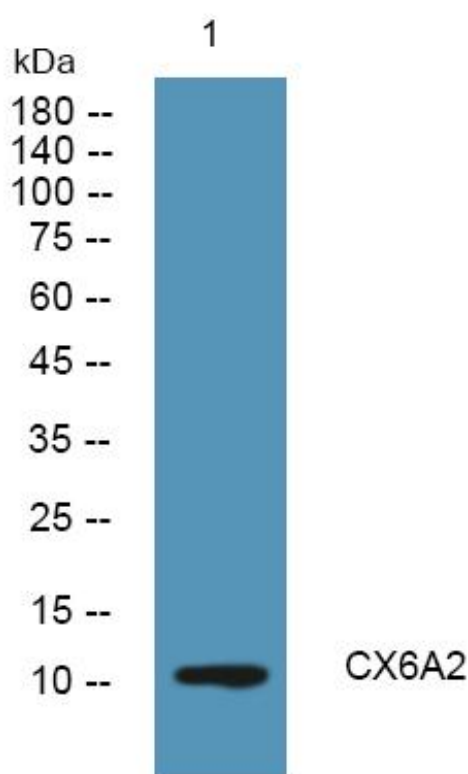
**matters needing attention**

Avoid repeated freezing and thawing!

**Usage suggestions**

This product can be used in immunological reaction related experiments. For more information, please consult technical personnel.

## Products Images



Western Blot analysis of various cells using CX6A2 Monoclonal Antibody