



# HES2 Monoclonal Antibody

Catalog No	BYmab-06593
Isotype	IgG
Reactivity	Human;Rat;Mouse;
Applications	WB
Gene Name	HES2 BHLHB40
Protein Name	Transcription factor HES-2 (Class B basic helix-loop-helix protein 40) (bHLHb40) (Hairy and enhancer of split 2)
Immunogen	Synthesized peptide derived from human protein . at AA range: 40-120
Specificity	HES2 Monoclonal Antibody detects endogenous levels of protein.
Formulation	Liquid in PBS containing 50% glycerol, and 0.02% sodium azide.
Source	Monoclonal, Mouse,IgG
Purification	The antibody was affinity-purified from mouse antiserum by affinity-chromatography using epitope-specific immunogen.
Dilution	WB 1:500-2000
Concentration	1 mg/ml
Purity	≥90%
Storage Stability	-20°C/1 year
Synonyms	
Observed Band	19kD
Cell Pathway	Nucleus .
Tissue Specificity	Expressed in placenta, pancreatic cancer, colon cancer with RER, cervical cancer, and in head and neck tumors.
Function	domain:Has a particular type of basic domain (presence of a helix-interrupting proline) that binds to the N-box (CACNAG), rather than the canonical E-box (CANNTG).,domain:The C-terminal WRPW motif is a transcriptional repression domain necessary for the interaction with Groucho/TLE family members, transcriptional corepressors recruited to specific target DNA by Hairy-related proteins.,function:Transcriptional repressor of genes that require a bHLH protein for their transcription.,similarity:Contains 1 basic helix-loop-helix (bHLH) domain.,similarity:Contains 1 Orange domain.,subunit:Transcription repression requires formation of a complex with a corepressor protein of the Groucho/TLE family.,tissue specificity:Expressed in placenta, pancreatic cancer, colon cancer with RER, cervical cancer, and in head and neck tumors.,

Nanjing BYabscience technology Co.,Ltd



## Background

domain:Has a particular type of basic domain (presence of a helix-interrupting proline) that binds to the N-box (CACNAG), rather than the canonical E-box (CANNTG).,domain:The C-terminal WRPW motif is a transcriptional repression domain necessary for the interaction with Groucho/TLE family members, transcriptional corepressors recruited to specific target DNA by Hairy-related proteins.,function:Transcriptional repressor of genes that require a bHLH protein for their transcription.,similarity:Contains 1 basic helix-loop-helix (bHLH) domain.,similarity:Contains 1 Orange domain.,subunit:Transcription repression requires formation of a complex with a corepressor protein of the Groucho/TLE family.,tissue specificity:Expressed in placenta, pancreatic cancer, colon cancer with RER, cervical cancer, and in head and neck tumors.,

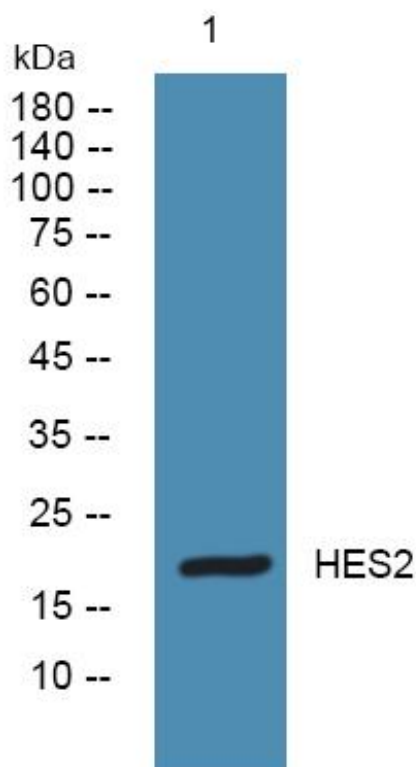
## matters needing attention

Avoid repeated freezing and thawing!

## Usage suggestions

This product can be used in immunological reaction related experiments. For more information, please consult technical personnel.

## Products Images



Western Blot analysis of various cells using HES2 Monoclonal Antibody