



RTDR1 Monoclonal Antibody

Catalog No	BYmab-06588
Isotype	IgG
Reactivity	Human;Rat;Mouse;
Applications	WB
Gene Name	RTDR1
Protein Name	Rhabdoid tumor deletion region protein 1
Immunogen	Synthesized peptide derived from part region of human protein
Specificity	RTDR1 Monoclonal Antibody detects endogenous levels of protein.
Formulation	Liquid in PBS containing 50% glycerol, and 0.02% sodium azide.
Source	Monoclonal, Mouse,IgG
Purification	The antibody was affinity-purified from mouse antiserum by affinity-chromatography using epitope-specific immunogen.
Dilution	WB 1:500-2000
Concentration	1 mg/ml
Purity	≥90%
Storage Stability	-20°C/1 year
Synonyms	
Observed Band	38kD
Cell Pathway	
Tissue Specificity	Expressed in adult cerebellum, spinal cord, spleen, skeletal muscle and some/5 out of 9 rhabdoid tumors. Detected in fetal brain, lung, liver and kidney.
Function	tissue specificity:Expressed in adult cerebellum, spinal cord, spleen, skeletal muscle and some/5 out of 9 rhabdoid tumors. Detected in fetal brain, lung, liver and kidney.,
Background	This gene encodes a protein with no known function but with slight similarity to a yeast vacuolar protein. The gene is located in a region deleted in pediatric rhabdoid tumors of the brain, kidney and soft tissues, but mutations in this gene have not been associated with the disease. [provided by RefSeq, Jul 2008],
matters needing attention	Avoid repeated freezing and thawing!

Nanjing BYabscience technology Co.,Ltd

网址: www.njbybio.com

官方热线: 025-5229-8998

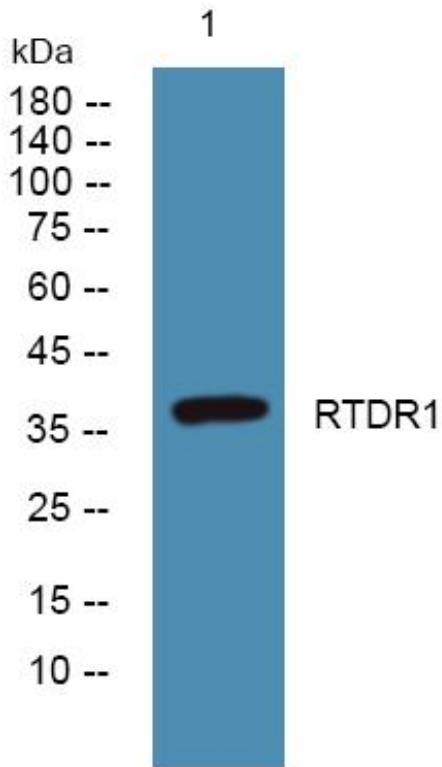
监督电话: 15950492658



Usage suggestions

This product can be used in immunological reaction related experiments. For more information, please consult technical personnel.

Products Images



Western Blot analysis of various cells using RTDR1 Monoclonal Antibody

Nanjing BYabscience technology Co.,Ltd

网址: www.njbybio.com

官方热线: 025-5229-8998

监督电话: 15950492658