



TOPRS Monoclonal Antibody

Catalog No	BYmab-06579
Isotype	IgG
Reactivity	Human;Mouse
Applications	WB
Gene Name	TOPORS LUN TP53BPL
Protein Name	E3 ubiquitin-protein ligase Topors (EC 6.3.2.-) (SUMO1-protein E3 ligase Topors) (Topoisomerase I-binding RING finger protein) (Topoisomerase I-binding arginine/serine-rich protein) (Tumor suppressor
Immunogen	Synthesized peptide derived from part region of human protein
Specificity	TOPRS Monoclonal Antibody detects endogenous levels of protein.
Formulation	Liquid in PBS containing 50% glycerol, and 0.02% sodium azide.
Source	Monoclonal, Mouse,IgG
Purification	The antibody was affinity-purified from mouse antiserum by affinity-chromatography using epitope-specific immunogen.
Dilution	WB 1:500-2000
Concentration	1 mg/ml
Purity	≥90%
Storage Stability	-20°C/1 year
Synonyms	
Observed Band	114kD
Cell Pathway	Nucleus. Nucleus, PML body. Localizes to discrete nuclear foci which partly overlap with PML nuclear bodies. Targeted to PML nuclear bodies upon DNA damage.
Tissue Specificity	Expressed at highest levels in testis and at lower levels in adrenal gland, bone marrow, brain, colon, heart, kidney, liver, muscle, ovary, pancreas, placenta, prostate, skeletal muscle, skin, small intestine, spleen, stomach, testis, thymus, thyroid and uterus. Expressed in the alveolar epithelium of the lung. Expression is commonly decreased in colon adenocarcinomas and lung cancers.
Function	caution:Was originally (PubMed:11278651) thought to bind to the palindromic consensus sequence 5'-TCCCAGCACTTTGGGA-3' and to regulate the transcription of numerous genes in the lung.,disease:Defects in TOPORS are the cause of retinitis pigmentosa type 31 (RP31) [MIM:609923]. RP leads to degeneration of retinal photoreceptor cells. Patients typically have night vision blindness and loss of midperipheral visual field. As their condition progresses,

Nanjing BYabscience technology Co.,Ltd



they lose their far peripheral visual field and eventually central vision as well. RP31 inheritance is autosomal dominant.,function:Functions as an ubiquitin-protein E3 ligase and as an E3 SUMO1-protein ligase. Can both ubiquitinate and sumoylate p53.,induction:By genotoxic agents such as cisplatin and camptothecin.,PTM:Sumoylated.,similarity:Contains 1 RING-type zinc finger.,subcellular location:Localizes to discrete nuclear foci which partly o

Background

This gene encodes a nuclear protein which is serine and arginine rich, and contains a RING-type zinc finger domain. It is highly expressed in the testis, and functions as an ubiquitin-protein E3 ligase. Mutations in this gene are associated with retinitis pigmentosa type 31. Alternatively spliced transcript variants, encoding different isoforms, have been observed for this locus. [provided by RefSeq, Sep 2010],

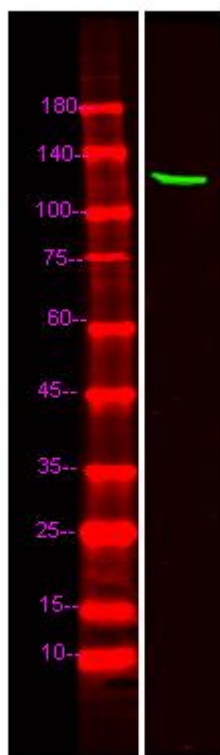
matters needing attention

Avoid repeated freezing and thawing!

Usage suggestions

This product can be used in immunological reaction related experiments. For more information, please consult technical personnel.

Products Images



Western Blot analysis of various cells using TOPRS Monoclonal Antibody

Nanjing BYabscience technology Co.,Ltd

网址: www.njbybio.com

官方热线: 025-5229-8998

监督电话: 15950492658