



S35C2 Monoclonal Antibody

Catalog No	BYmab-06577
Isotype	IgG
Reactivity	Human;Rat;Mouse;
Applications	WB
Gene Name	SLC35C2 C20orf5 OVCOV1 CGI-15
Protein Name	Solute carrier family 35 member C2 (Ovarian cancer-overexpressed gene 1 protein)
Immunogen	Synthesized peptide derived from part region of human protein
Specificity	S35C2 Monoclonal Antibody detects endogenous levels of protein.
Formulation	Liquid in PBS containing 50% glycerol, and 0.02% sodium azide.
Source	Monoclonal, Mouse,IgG
Purification	The antibody was affinity-purified from mouse antiserum by affinity-chromatography using epitope-specific immunogen.
Dilution	WB 1:500-2000
Concentration	1 mg/ml
Purity	≥90%
Storage Stability	-20°C/1 year
Synonyms	
Observed Band	40kD
Cell Pathway	Membrane ; Multi-pass membrane protein . Golgi apparatus, cis-Golgi network membrane . Endoplasmic reticulum-Golgi intermediate compartment membrane .
Tissue Specificity	Ubiquitously expressed although the level of expression is tissue dependent. Overexpressed in ovarian cancer.
Function	function:May play an important role in the cellular response to tissue hypoxia.,induction:In hypoxic trophoblast cells.,similarity:Belongs to the TPT transporter family. SLC35C subfamily.,tissue specificity:Ubiquitously expressed although the level of expression is tissue dependent. Overexpressed in ovarian cancer.,
Background	This gene encodes a member of the triose-phosphate transporter protein family. This gene is regulated by oxygen tension, is induced in hypoxic trophoblast cells, and is overexpressed in ovarian cancer. Alternative splicing results in multiple transcript variants. A pseudogene of this gene has been defined on the X chromosome. [provided by RefSeq, Jul 2013],

Nanjing BYabscience technology Co.,Ltd



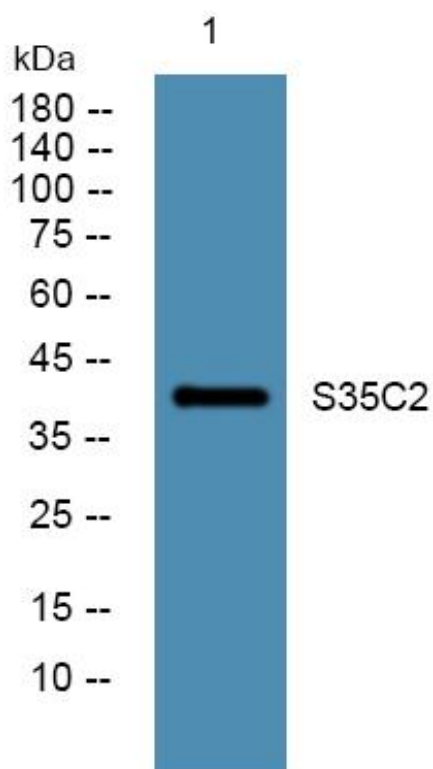
matters needing attention

Avoid repeated freezing and thawing!

Usage suggestions

This product can be used in immunological reaction related experiments. For more information, please consult technical personnel.

Products Images



Western Blot analysis of various cells using S35C2 Monoclonal Antibody