



# TSYL2 Monoclonal Antibody

Catalog No	BYmab-06570
Isotype	IgG
Reactivity	Human;Mouse
Applications	WB
Gene Name	TSPYL2 CDA1 DENTT TSPX HRIHFB2216
Protein Name	Testis-specific Y-encoded-like protein 2 (TSPY-like protein 2) (Cell division autoantigen 1) (Cutaneous T-cell lymphoma-associated antigen se20-4) (CTCL-associated antigen se20-4) (Differentially-expr
Immunogen	Synthesized peptide derived from part region of human protein
Specificity	TSYL2 Monoclonal Antibody detects endogenous levels of protein.
Formulation	Liquid in PBS containing 50% glycerol, and 0.02% sodium azide.
Source	Monoclonal, Mouse,IgG
Purification	The antibody was affinity-purified from mouse antiserum by affinity-chromatography using epitope-specific immunogen.
Dilution	WB 1:500-2000
Concentration	1 mg/ml
Purity	≥90%
Storage Stability	-20°C/1 year
Synonyms	
Observed Band	76kD
Cell Pathway	Nucleus . Cytoplasm . Enriched in transcriptionally active regions of chromatin in neurons. .
Tissue Specificity	Ubiquitously expressed, with highest levels in brain, testis and heart, and lowest levels in liver and pancreas.
Function	function:Part of the CASK/TRB1/TSPYL2 transcriptional complex which modulates gene expression in response to neuronal synaptic activity, probably by facilitating nucleosome assembly. May inhibit cell proliferation by inducing p53-dependent CDKN1A expression.,induction:Up-regulated in growth-arrested T-cells. Induced by TGFB1 and all-trans retinoic acid in lung cancer cells (at protein level).,miscellaneous:Subject to X inactivation.,miscellaneous:Synaptic activity down-regulates TSPYL2 protein levels by inducing rapid proteasomal degradation.,PTM:Phosphorylation at Ser-20 and/or Thr-340 impairs function on cell proliferation.,similarity:Belongs to the nucleosome assembly protein (NAP) family.,subcellular location:Enriched in transcriptionally active regions of

Nanjing BYabscience technology Co.,Ltd



chromatin in neurons.,subunit:Interacts with histones. Interacts with CASK. Part of a complex containing CASK, TRB1 and TSPYL2.,t

#### Background

This gene encodes a member of the testis-specific protein Y-encoded, TSPY-like/SET/nucleosome assembly protein-1 superfamily. The encoded protein is localized to the nucleolus where it functions in chromatin remodeling and as an inhibitor of cell-cycle progression. This protein may play a role in the suppression of tumor growth. [provided by RefSeq, Sep 2009],

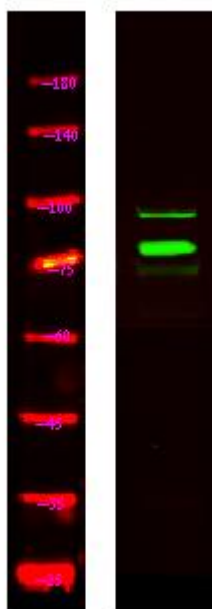
#### matters needing attention

Avoid repeated freezing and thawing!

#### Usage suggestions

This product can be used in immunological reaction related experiments. For more information, please consult technical personnel.

## Products Images



Western Blot analysis of various cells using TSYL2 Monoclonal Antibody

Nanjing BYabs science technology Co.,Ltd

网址: [www.njbybio.com](http://www.njbybio.com)

官方热线: 025-5229-8998

监督电话: 15950492658