



CPXCR Monoclonal Antibody

Catalog No	BYmab-06534
Isotype	IgG
Reactivity	Human;Rat;Mouse;
Applications	WB
Gene Name	CPXCR1
Protein Name	CPX chromosomal region candidate gene 1 protein (Cancer/testis antigen 77) (CT77)
Immunogen	Synthesized peptide derived from human protein . at AA range: 30-110
Specificity	CPXCR Monoclonal Antibody detects endogenous levels of protein.
Formulation	Liquid in PBS containing 50% glycerol, and 0.02% sodium azide.
Source	Monoclonal, Mouse,IgG
Purification	The antibody was affinity-purified from mouse antiserum by affinity-chromatography using epitope-specific immunogen.
Dilution	WB 1:500-2000
Concentration	1 mg/ml
Purity	≥90%
Storage Stability	-20°C/1 year
Synonyms	
Observed Band	33kD
Cell Pathway	
Tissue Specificity	Expressed in a variety of fetal tissues.
Function	tissue specificity:Expressed in a variety of fetal tissues.,
Background	This gene is one of several genes identified in a region of the X chromosome associated with an X-linked cleft palate (CPX) disorder. The encoded protein contains a motif similar to a motif found in zinc-finger proteins. Mutation analysis of this gene has not revealed any mutation which causes the CPX disorder. Multiple alternatively spliced variants, encoding the same protein, have been identified. [provided by RefSeq, Sep 2011],
matters needing attention	Avoid repeated freezing and thawing!

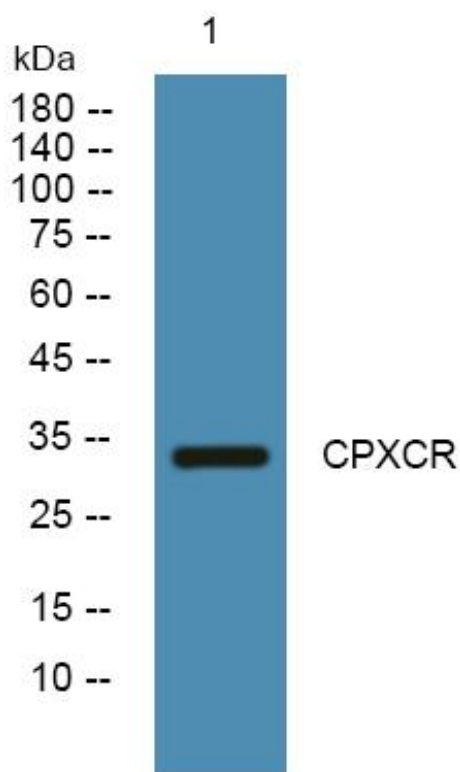
Nanjing BYabscience technology Co.,Ltd



Usage suggestions

This product can be used in immunological reaction related experiments. For more information, please consult technical personnel.

Products Images



Western Blot analysis of various cells using CPXCR Monoclonal Antibody

Nanjing BYabs science technology Co.,Ltd

网址: www.njbybio.com

官方热线: 025-5229-8998

监督电话: 15950492658