



# YAF2 Monoclonal Antibody

<b>Catalog No</b>	BYmab-06527
<b>Isotype</b>	IgG
<b>Reactivity</b>	Human;Mouse;Rat
<b>Applications</b>	WB
<b>Gene Name</b>	YAF2
<b>Protein Name</b>	YY1-associated factor 2
<b>Immunogen</b>	Synthesized peptide derived from part region of human protein
<b>Specificity</b>	YAF2 Monoclonal Antibody detects endogenous levels of protein.
<b>Formulation</b>	Liquid in PBS containing 50% glycerol, and 0.02% sodium azide.
<b>Source</b>	Monoclonal, Mouse,IgG
<b>Purification</b>	The antibody was affinity-purified from mouse antiserum by affinity-chromatography using epitope-specific immunogen.
<b>Dilution</b>	WB 1:500-2000
<b>Concentration</b>	1 mg/ml
<b>Purity</b>	≥90%
<b>Storage Stability</b>	-20°C/1 year
<b>Synonyms</b>	
<b>Observed Band</b>	19kD
<b>Cell Pathway</b>	Nucleus .
<b>Tissue Specificity</b>	Brain,Epithelium,Skeletal muscle,
<b>Function</b>	function: Binds to MYC and inhibits MYC-mediated transactivation. Also binds to MYCN and enhances MYCN-dependent transcriptional activation. Increases calpain 2-mediated proteolysis of YY1 in vitro. Component of the E2F6.com-1 complex, a repressive complex that methylates 'Lys-9' of histone H3, suggesting that it is involved in chromatin-remodeling.,PTM: Phosphorylated upon DNA damage, probably by ATM or ATR.,similarity: Contains 1 RanBP2-type zinc finger.,subunit: Interacts with MYC, MYCN, RNF2/RING1B and YY1. Part of the E2F6.com-1 complex in G0 phase composed of E2F6, MGA, MAX, TFDP1, CBX3, BAT8, EUHMTASE1, RING1, RNF2, MBLR, L3MBTL2 and YAF2.,
<b>Background</b>	This gene encodes a zinc finger containing protein that functions in the regulation of transcription. This protein was identified as an interacting partner of

**Nanjing BYabscience technology Co.,Ltd**



transcriptional repressor protein Yy1, and also interacts with other transcriptional regulators, including Myc and Polycomb. This protein can promote proteolysis of Yy1. Multiple alternatively spliced transcript variants have been found. [provided by RefSeq, Feb 2016],

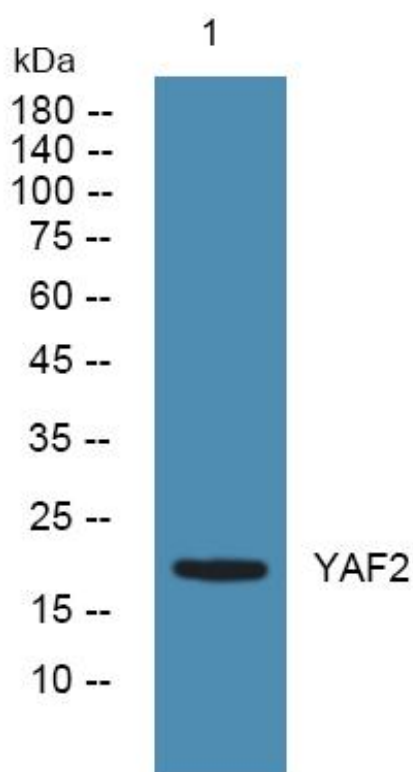
**matters needing attention**

Avoid repeated freezing and thawing!

**Usage suggestions**

This product can be used in immunological reaction related experiments. For more information, please consult technical personnel.

## Products Images



Western Blot analysis of various cells using YAF2 Monoclonal Antibody