



NUFP2 Monoclonal Antibody

Catalog No	BYmab-06517
Isotype	IgG
Reactivity	Human;Mouse
Applications	WB
Gene Name	NUFIP2 KIAA1321 PIG1
Protein Name	Nuclear fragile X mental retardation-interacting protein 2 (82 kDa FMRP-interacting protein) (82-FIP) (Cell proliferation-inducing gene 1 protein) (FMRP-interacting protein 2)
Immunogen	Synthesized peptide derived from human protein . at AA range: 180-260
Specificity	NUFP2 Monoclonal Antibody detects endogenous levels of protein.
Formulation	Liquid in PBS containing 50% glycerol, and 0.02% sodium azide.
Source	Monoclonal, Mouse,IgG
Purification	The antibody was affinity-purified from mouse antiserum by affinity-chromatography using epitope-specific immunogen.
Dilution	WB 1:500-2000
Concentration	1 mg/ml
Purity	≥90%
Storage Stability	-20°C/1 year
Synonyms	
Observed Band	76kD
Cell Pathway	Nucleus . Cytoplasm . Cytoplasm, Stress granule . Distribution is cell cycle-modulated, being cytoplasmic in the G2/M phase and accumulating in nucleus during the G1 phase (PubMed:12837692). .
Tissue Specificity	Brain,Cervix carcinoma,Epithelium,PCR rescued clones,T-cell,Uterus,
Function	function:Binds RNA.,PTM:Phosphorylated upon DNA damage, probably by ATM or ATR.,subcellular location:Distribution is cell cycle-modulated, being cytoplasmic in the G2/M phase and accumulating in nucleus during the G1 phase.,subunit:Interacts with FMRP.,
Background	function:Binds RNA.,PTM:Phosphorylated upon DNA damage, probably by ATM or ATR.,subcellular location:Distribution is cell cycle-modulated, being cytoplasmic in the G2/M phase and accumulating in nucleus during the G1 phase.,subunit:Interacts with FMRP.,

Nanjing BYabscience technology Co.,Ltd



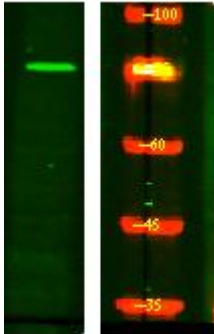
matters needing attention

Avoid repeated freezing and thawing!

Usage suggestions

This product can be used in immunological reaction related experiments. For more information, please consult technical personnel.

Products Images



Western Blot analysis of various cells using NUFP2 Monoclonal Antibody