



# ATOH8 Monoclonal Antibody

|                           |  |
|---------------------------|--|
| <b>Catalog No</b>         | BYmab-06497  |
| <b>Isotype</b>            | IgG  |
| <b>Reactivity</b>         | Human;Rat;Mouse;   |
| <b>Applications</b>       | WB   |
| <b>Gene Name</b>          | ATOH8 ATH6 BHLHA21   |
| <b>Protein Name</b>       | Protein atonal homolog 8 (Class A basic helix-loop-helix protein 21) (bHLHa21) (Helix-loop-helix protein hATH-6) (hATH6)   |
| <b>Immunogen</b>          | Synthesized peptide derived from part region of human protein  |
| <b>Specificity</b>        | ATOH8 Monoclonal Antibody detects endogenous levels of protein.  |
| <b>Formulation</b>        | Liquid in PBS containing 50% glycerol, and 0.02% sodium azide.   |
| <b>Source</b>             | Monoclonal, Mouse,IgG  |
| <b>Purification</b>       | The antibody was affinity-purified from mouse antiserum by affinity-chromatography using epitope-specific immunogen.   |
| <b>Dilution</b>           | WB 1:500-2000  |
| <b>Concentration</b>      | 1 mg/ml  |
| <b>Purity</b>             | ≥90%   |
| <b>Storage Stability</b>  | -20°C/1 year   |
| <b>Synonyms</b>           |  |
| <b>Observed Band</b>      | 35kD   |
| <b>Cell Pathway</b>       | Nucleus . Nucleus speckle . Cytoplasm .  |
| <b>Tissue Specificity</b> | Expressed in lung, liver, kidney, heart and pancreas. Expressed in endothel of umbilical vessels.  |
| <b>Function</b>           | function:Putative transcription factor. May be implicated in specification and differentiation of neuronal cell lineages in the brain. May participate in kidney development and may be involved in podocyte differentiation.,similarity:Contains 1 basic helix-loop-helix (bHLH) domain.,subunit:Efficient DNA binding requires dimerization with another bHLH protein.,tissue specificity:Expressed in lung, liver, kidney, heart and pancreas. Expressed in endothel of umbilical vessels., |
| <b>Background</b>         | function:Putative transcription factor. May be implicated in specification and differentiation of neuronal cell lineages in the brain. May participate in kidney development and may be involved in podocyte differentiation.,similarity:Contains 1 basic helix-loop-helix (bHLH) domain.,subunit:Efficient DNA binding requires dimerization with another bHLH protein.,tissue specificity:Expressed in lung, liver,  |

**Nanjing BYabscience technology Co.,Ltd**



kidney, heart and pancreas. Expressed in endothel of umbilical vessels.,

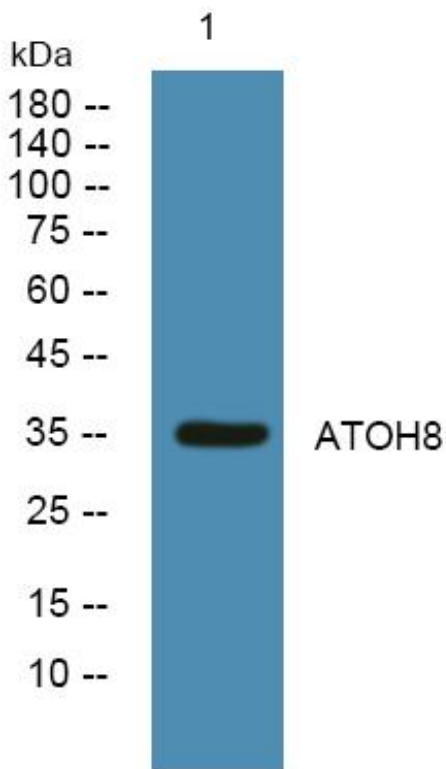
**matters needing attention**

Avoid repeated freezing and thawing!

**Usage suggestions**

This product can be used in immunological reaction related experiments. For more information, please consult technical personnel.

## Products Images



Western Blot analysis of various cells using ATOH8 Monoclonal Antibody