



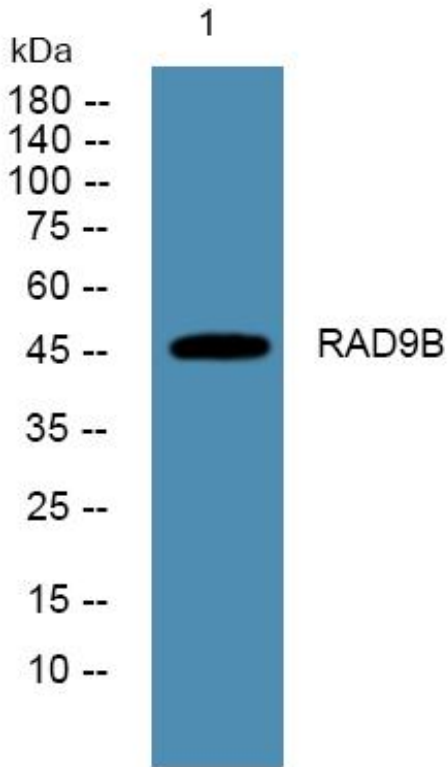
RAD9B Monoclonal Antibody

| | |
|---------------------------|--|
| Catalog No | BYmab-06486 |
| Isotype | IgG |
| Reactivity | Human;Rat;Mouse; |
| Applications | WB |
| Gene Name | RAD9B |
| Protein Name | Cell cycle checkpoint control protein RAD9B (DNA repair exonuclease rad9 homolog B) (hRAD9B) |
| Immunogen | Synthesized peptide derived from part region of human protein |
| Specificity | RAD9B Monoclonal Antibody detects endogenous levels of protein. |
| Formulation | Liquid in PBS containing 50% glycerol, and 0.02% sodium azide. |
| Source | Monoclonal, Mouse,IgG |
| Purification | The antibody was affinity-purified from mouse antiserum by affinity-chromatography using epitope-specific immunogen. |
| Dilution | WB 1:500-2000 |
| Concentration | 1 mg/ml |
| Purity | ≥90% |
| Storage Stability | -20°C/1 year |
| Synonyms | |
| Observed Band | 46kD |
| Cell Pathway | nucleoplasm,checkpoint clamp complex, |
| Tissue Specificity | Expressed in testis and skeletal muscle. |
| Function | similarity:Belongs to the rad9 family.,subunit:Interacts with HUS1, HUS1B, RAD1, RAD9A and RAD17.,tissue specificity:Expressed in testis and skeletal muscle., |
| Background | similarity:Belongs to the rad9 family.,subunit:Interacts with HUS1, HUS1B, RAD1, RAD9A and RAD17.,tissue specificity:Expressed in testis and skeletal muscle., |
| matters needing attention | Avoid repeated freezing and thawing! |
| Usage suggestions | This product can be used in immunological reaction related experiments. For more information, please consult technical personnel. |

Nanjing BYabscience technology Co.,Ltd



Products Images



Western Blot analysis of various cells using RAD9B
Monoclonal Antibody