



MAGH1 Monoclonal Antibody

Catalog No	BYmab-06482
Isotype	IgG
Reactivity	Human;Mouse;Rat
Applications	WB
Gene Name	MAGEH1 APR1
Protein Name	Melanoma-associated antigen H1 (Apoptosis-related protein 1) (APR-1) (MAGE-H1 antigen) (Restin)
Immunogen	Synthesized peptide derived from human protein . at AA range: 10-90
Specificity	MAGH1 Monoclonal Antibody detects endogenous levels of protein.
Formulation	Liquid in PBS containing 50% glycerol, and 0.02% sodium azide.
Source	Monoclonal, Mouse,IgG
Purification	The antibody was affinity-purified from mouse antiserum by affinity-chromatography using epitope-specific immunogen.
Dilution	WB 1:500-2000
Concentration	1 mg/ml
Purity	≥90%
Storage Stability	-20°C/1 year
Synonyms	
Observed Band	24kD
Cell Pathway	cytoplasm,
Tissue Specificity	Brain,Lung,Testis,
Function	similarity:Contains 1 MAGE domain.,
Background	This gene belongs to the non-CT (non cancer/testis) subgroup of the melanoma-associated antigen (MAGE) superfamily. The encoded protein is likely associated with apoptosis, cell cycle arrest, growth inhibition or cell differentiation. The protein may be involved in the atRA (all-trans retinoic acid) signaling through the STAT1-alpha (signal transducer and activator of transcription 1-alpha) pathway. [provided by RefSeq, Aug 2013],
matters needing attention	Avoid repeated freezing and thawing!

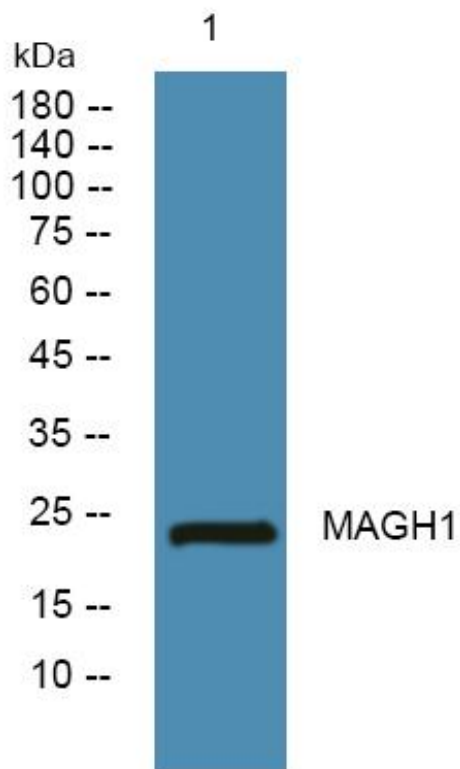
Nanjing BYabscience technology Co.,Ltd



Usage suggestions

This product can be used in immunological reaction related experiments. For more information, please consult technical personnel.

Products Images



Western Blot analysis of various cells using MAGH1 Monoclonal Antibody

Nanjing BYabs science technology Co.,Ltd

网址: www.njbybio.com

官方热线: 025-5229-8998

监督电话: 15950492658