



# CYLC2 Monoclonal Antibody

Catalog No	BYmab-06459
Isotype	IgG
Reactivity	Human;Rat;Mouse;
Applications	WB
Gene Name	CYLC2 CYL2
Protein Name	Cylicin-2 (Cylicin II) (Multiple-band polypeptide II)
Immunogen	Synthesized peptide derived from human protein . at AA range: 280-360
Specificity	CYLC2 Monoclonal Antibody detects endogenous levels of protein.
Formulation	Liquid in PBS containing 50% glycerol, and 0.02% sodium azide.
Source	Monoclonal, Mouse,IgG
Purification	The antibody was affinity-purified from mouse antiserum by affinity-chromatography using epitope-specific immunogen.
Dilution	WB 1:500-2000
Concentration	1 mg/ml
Purity	≥90%
Storage Stability	-20°C/1 year
Synonyms	
Observed Band	38kD
Cell Pathway	Cytoplasm, cytoskeleton, perinuclear theca, calyx. Sperm head cytoskeletal structure.
Tissue Specificity	Testis.
Function	function:Possible architectural role during spermatogenesis. May be involved in spermatid differentiation.,subcellular location:Sperm head cytoskeletal structure.,tissue specificity:Testis.,
Background	Cylicin II (CYCL2) is specifically expressed in testis and is part of the cytoskeletal calyx of mammalian sperm heads. Cylicin II may play a role in the morphogenesis of the sperm head. [provided by RefSeq, Jul 2008],
matters needing attention	Avoid repeated freezing and thawing!

Nanjing BYabscience technology Co.,Ltd

网址: [www.njbybio.com](http://www.njbybio.com)

官方热线: 025-5229-8998

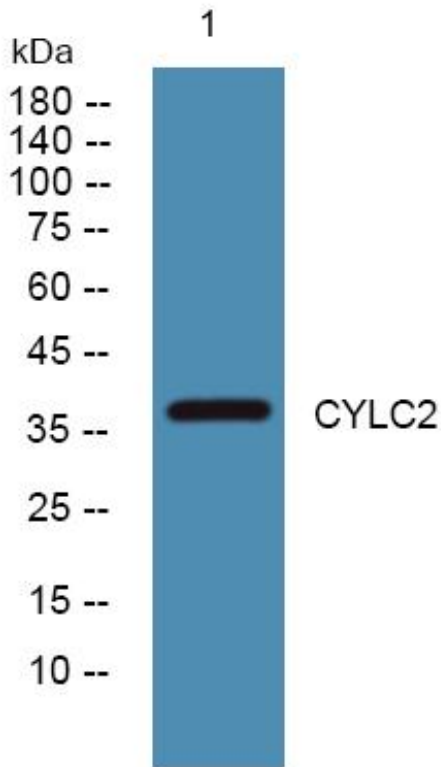
监督电话: 15950492658



### Usage suggestions

This product can be used in immunological reaction related experiments. For more information, please consult technical personnel.

## Products Images



Western Blot analysis of various cells using CYLC2 Monoclonal Antibody

Nanjing BYabs science technology Co.,Ltd

网址: [www.njbybio.com](http://www.njbybio.com)

官方热线: 025-5229-8998

监督电话: 15950492658