



B2L10 Monoclonal Antibody

Catalog No	BYmab-06425
Isotype	IgG
Reactivity	Human;Rat;Mouse;
Applications	WB
Gene Name	BCL2L10 BCLB
Protein Name	Bcl-2-like protein 10 (Bcl2-L-10) (Anti-apoptotic protein NrH) (Apoptosis regulator Bcl-B)
Immunogen	Synthesized peptide derived from human protein . at AA range: 70-150
Specificity	B2L10 Monoclonal Antibody detects endogenous levels of protein.
Formulation	Liquid in PBS containing 50% glycerol, and 0.02% sodium azide.
Source	Monoclonal, Mouse,IgG
Purification	The antibody was affinity-purified from mouse antiserum by affinity-chromatography using epitope-specific immunogen.
Dilution	WB 1:500-2000
Concentration	1 mg/ml
Purity	≥90%
Storage Stability	-20°C/1 year
Synonyms	
Observed Band	21kD
Cell Pathway	Mitochondrion . Nucleus membrane . Endoplasmic reticulum . Cytoplasm, cytoskeleton, spindle . Localizes to mitochondria-associated endoplasmic reticulum membranes (MAMs) (PubMed:27995898). Localization to MAMs is greatly reduced under apoptotic stress conditions (PubMed:27995898). .
Tissue Specificity	Widely expressed in adult tissues. Preferentially expressed in lung, liver and kidney.
Function	function:Promotes cell survival. Suppresses apoptosis induced by BAX but not BAK.,similarity:Belongs to the Bcl-2 family.,subunit:Binds to Bcl-2, Bcl-X and BAX. Interacts with APAF1.,tissue specificity:Widely expressed in adult tissues. Preferentially expressed in the lungs, the liver and the kidneys.,
Background	The protein encoded by this gene belongs to the BCL-2 protein family. BCL-2 family members form hetero- or homodimers and act as anti- or pro-apoptotic regulators that are involved in a wide variety of cellular activities. The protein encoded by this gene contains conserved BH4, BH1 and BH2 domains. This protein can interact with other members of BCL-2 protein family including BCL2,

Nanjing BYabscience technology Co.,Ltd



BCL2L1/BCL-X(L), and BAX. Overexpression of this gene has been shown to suppress cell apoptosis possibly through the prevention of cytochrome C release from the mitochondria, and thus activating caspase-3 activation. The mouse counterpart of this protein is found to interact with Apaf1 and forms a protein complex with Caspase 9, which suggests the involvement of this protein in APAF1 and CASPASE 9 related apoptotic pathway. [provided by RefSeq, Jul 2008],

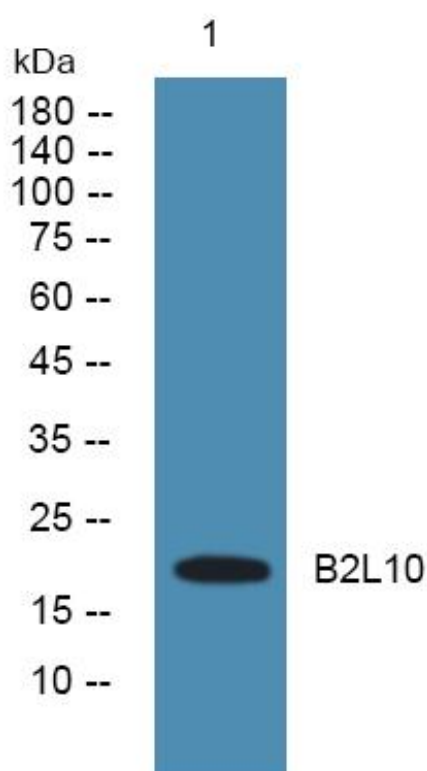
matters needing attention

Avoid repeated freezing and thawing!

Usage suggestions

This product can be used in immunological reaction related experiments. For more information, please consult technical personnel.

Products Images



Western Blot analysis of various cells using B2L10 Monoclonal Antibody