



# VAX2 Monoclonal Antibody

<b>Catalog No</b>	BYmab-06389
<b>Isotype</b>	IgG
<b>Reactivity</b>	Human;Rat;Mouse
<b>Applications</b>	WB
<b>Gene Name</b>	VAX2
<b>Protein Name</b>	Ventral anterior homeobox 2
<b>Immunogen</b>	Synthesized peptide derived from part region of human protein
<b>Specificity</b>	VAX2 Monoclonal Antibody detects endogenous levels of protein.
<b>Formulation</b>	Liquid in PBS containing 50% glycerol, and 0.02% sodium azide.
<b>Source</b>	Monoclonal, Mouse,IgG
<b>Purification</b>	The antibody was affinity-purified from mouse antiserum by affinity-chromatography using epitope-specific immunogen.
<b>Dilution</b>	WB 1:500-2000
<b>Concentration</b>	1 mg/ml
<b>Purity</b>	≥90%
<b>Storage Stability</b>	-20°C/1 year
<b>Synonyms</b>	
<b>Observed Band</b>	31kD
<b>Cell Pathway</b>	Nucleus .
<b>Tissue Specificity</b>	Teratocarcinoma,Uterus,
<b>Function</b>	developmental stage:Expressed in the ventral part of the optic vesicles at 7 week dpc.,function:Plays a crucial role in eye development and, in particular, in the specification of the ventral optic vesicle (By similarity). May be a regulator of axial polarization in the retina.,similarity:Belongs to the EMX homeobox family.,similarity:Contains 1 homeobox DNA-binding domain.,
<b>Background</b>	This gene encodes a homeobox protein and is almost exclusively expressed in the ventral portion of the retina during development. In mouse studies, this gene was found to be required for the correct formation of the optic fissure and other aspects of retinal development. [provided by RefSeq, Sep 2008],

**Nanjing BYabscience technology Co.,Ltd**

网址: [www.njbybio.com](http://www.njbybio.com)

官方热线: 025-5229-8998

监督电话: 15950492658



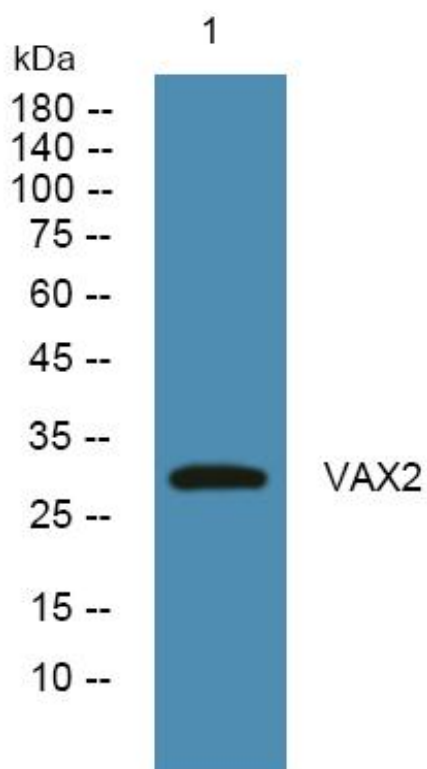
**matters needing attention**

Avoid repeated freezing and thawing!

**Usage suggestions**

This product can be used in immunological reaction related experiments. For more information, please consult technical personnel.

## Products Images



Western Blot analysis of various cells using VAX2 Monoclonal Antibody