



# UBE2Z Monoclonal Antibody

<b>Catalog No</b>	BYmab-06370
<b>Isotype</b>	IgG
<b>Reactivity</b>	Human;Rat;Mouse
<b>Applications</b>	WB
<b>Gene Name</b>	UBE2Z HOYS7
<b>Protein Name</b>	Ubiquitin-conjugating enzyme E2 Z (EC 6.3.2.19) (Uba6-specific E2 conjugating enzyme 1) (Use1) (Ubiquitin carrier protein Z) (Ubiquitin-protein ligase Z)
<b>Immunogen</b>	Synthesized peptide derived from part region of human protein
<b>Specificity</b>	UBE2Z Monoclonal Antibody detects endogenous levels of protein.
<b>Formulation</b>	Liquid in PBS containing 50% glycerol, and 0.02% sodium azide.
<b>Source</b>	Monoclonal, Mouse,IgG
<b>Purification</b>	The antibody was affinity-purified from mouse antiserum by affinity-chromatography using epitope-specific immunogen.
<b>Dilution</b>	WB 1:500-2000
<b>Concentration</b>	1 mg/ml
<b>Purity</b>	≥90%
<b>Storage Stability</b>	-20°C/1 year
<b>Synonyms</b>	
<b>Observed Band</b>	38kD
<b>Cell Pathway</b>	Cytoplasm . Nucleus .
<b>Tissue Specificity</b>	Widely expressed. Highly in placenta, pancreas, spleen and testis.
<b>Function</b>	catalytic activity:ATP + ubiquitin + protein lysine = AMP + diphosphate + protein N-ubiquityllysine.,function:Catalyzes the covalent attachment of ubiquitin to other proteins (By similarity). Specific substrate for UBE1L2, not charged with ubiquitin by UBE1. May be involved in apoptosis regulation.,pathway:Protein modification; protein ubiquitination.,similarity:Belongs to the ubiquitin-conjugating enzyme family.,tissue specificity:Widely expressed. Highly in placenta, pancreas, spleen and testis.,
<b>Background</b>	This gene encodes an enzyme which ubiquitinates proteins which participate in signaling pathways and apoptosis. [provided by RefSeq, Feb 2012],

**Nanjing BYabscience technology Co.,Ltd**



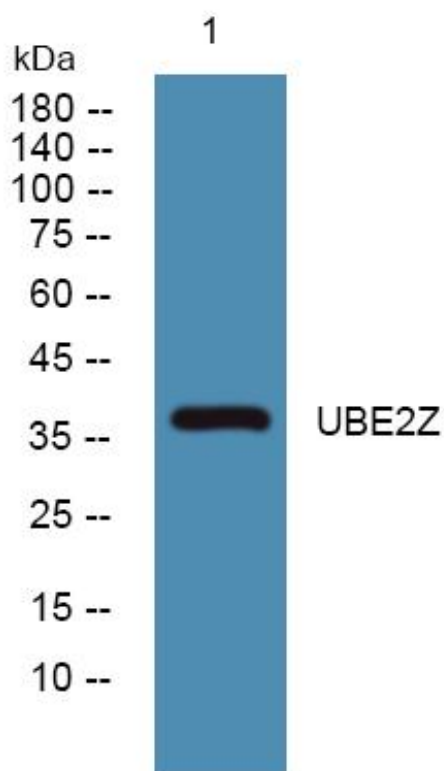
**matters needing attention**

Avoid repeated freezing and thawing!

**Usage suggestions**

This product can be used in immunological reaction related experiments. For more information, please consult technical personnel.

## Products Images



Western Blot analysis of various cells using UBE2Z Monoclonal Antibody