



# UBE2S Monoclonal Antibody

<b>Catalog No</b>	BYmab-06368
<b>Isotype</b>	IgG
<b>Reactivity</b>	Human;Rat;Mouse
<b>Applications</b>	WB
<b>Gene Name</b>	UBE2S E2EPF OK/SW-cl.73
<b>Protein Name</b>	Ubiquitin-conjugating enzyme E2 S (EC 6.3.2.19) (E2-EPF) (Ubiquitin carrier protein S) (Ubiquitin-conjugating enzyme E2-24 kDa) (Ubiquitin-conjugating enzyme E2-EPF5) (Ubiquitin-protein ligase S)
<b>Immunogen</b>	Synthesized peptide derived from part region of human protein
<b>Specificity</b>	UBE2S Monoclonal Antibody detects endogenous levels of protein.
<b>Formulation</b>	Liquid in PBS containing 50% glycerol, and 0.02% sodium azide.
<b>Source</b>	Monoclonal, Mouse,IgG
<b>Purification</b>	The antibody was affinity-purified from mouse antiserum by affinity-chromatography using epitope-specific immunogen.
<b>Dilution</b>	WB 1:500-2000
<b>Concentration</b>	1 mg/ml
<b>Purity</b>	≥90%
<b>Storage Stability</b>	-20°C/1 year
<b>Synonyms</b>	
<b>Observed Band</b>	24kD
<b>Cell Pathway</b>	anaphase-promoting complex,cytoplasm,
<b>Tissue Specificity</b>	Colon,Colon adenocarcinoma,Foreskin,Skin,Testis,
<b>Function</b>	catalytic activity:ATP + ubiquitin + protein lysine = AMP + diphosphate + protein N-ubiquityllysine.,function:Catalyzes the covalent attachment of ubiquitin to other proteins.,pathway:Protein modification; protein ubiquitination.,similarity:Belongs to the ubiquitin-conjugating enzyme family.,
<b>Background</b>	This gene encodes a member of the ubiquitin-conjugating enzyme family. The encoded protein is able to form a thiol ester linkage with ubiquitin in a ubiquitin activating enzyme-dependent manner, a characteristic property of ubiquitin carrier proteins. [provided by RefSeq, Jul 2008],

**Nanjing BYabscience technology Co.,Ltd**



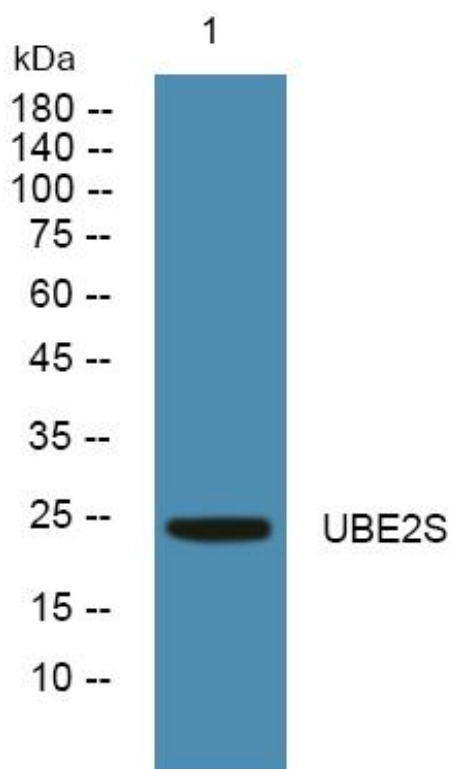
**matters needing attention**

Avoid repeated freezing and thawing!

**Usage suggestions**

This product can be used in immunological reaction related experiments. For more information, please consult technical personnel.

## Products Images



Western Blot analysis of various cells using UBE2S Monoclonal Antibody