



# UB2R2 Monoclonal Antibody

Catalog No	BYmab-06367
Isotype	IgG
Reactivity	Human;Mouse
Applications	WB
Gene Name	UBE2R2 CDC34B UBC3B
Protein Name	Ubiquitin-conjugating enzyme E2 R2 (EC 6.3.2.19) (Ubiquitin carrier protein R2) (Ubiquitin-conjugating enzyme E2-CDC34B) (Ubiquitin-protein ligase R2)
Immunogen	Synthesized peptide derived from part region of human protein
Specificity	UB2R2 Monoclonal Antibody detects endogenous levels of protein.
Formulation	Liquid in PBS containing 50% glycerol, and 0.02% sodium azide.
Source	Monoclonal, Mouse,IgG
Purification	The antibody was affinity-purified from mouse antiserum by affinity-chromatography using epitope-specific immunogen.
Dilution	WB 1:500-2000
Concentration	1 mg/ml
Purity	≥90%
Storage Stability	-20°C/1 year
Synonyms	
Observed Band	26kD
Cell Pathway	cytoplasm,
Tissue Specificity	Carcinoma,Ovary,Testis,
Function	catalytic activity:ATP + ubiquitin + protein lysine = AMP + diphosphate + protein N-ubiquityllysine.,function:Catalyzes the covalent attachment of ubiquitin to other proteins. May be involved in degradation of katenin.,pathway:Protein modification; protein ubiquitination.,similarity:Belongs to the ubiquitin-conjugating enzyme family.,subunit:When phosphorylated, interacts with beta-TrCP (BTRC).,
Background	Protein kinase CK2 is a ubiquitous and pleiotropic Ser/Thr protein kinase involved in cell growth and transformation. This gene encodes a protein similar to the E2 ubiquitin conjugating enzyme UBC3/CDC34. Studies suggest that CK2-dependent phosphorylation of this ubiquitin-conjugating enzyme functions by regulating beta-TrCP substrate recognition and induces its interaction with beta-TrCP, enhancing beta-catenin degradation. [provided by RefSeq, Jul 2008],

Nanjing BYabscience technology Co.,Ltd



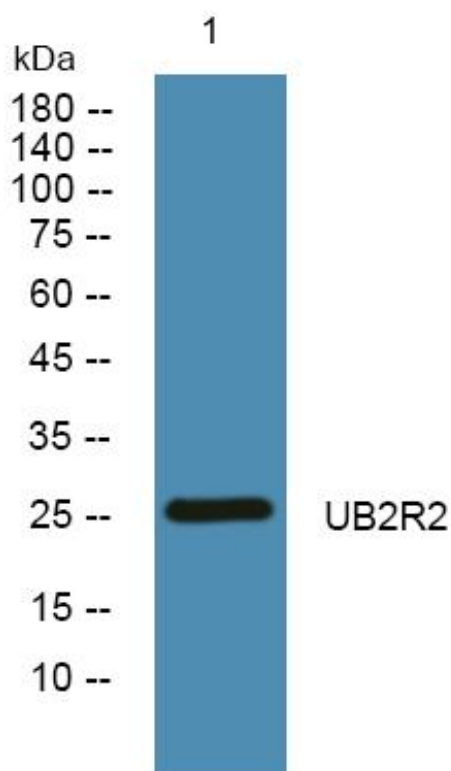
**matters needing attention**

Avoid repeated freezing and thawing!

**Usage suggestions**

This product can be used in immunological reaction related experiments. For more information, please consult technical personnel.

## Products Images



Western Blot analysis of various cells using UB2R2 Monoclonal Antibody