



UB2G2 Monoclonal Antibody

Catalog No	BYmab-06361
Isotype	IgG
Reactivity	Human;Mouse
Applications	WB
Gene Name	UBE2G2
Protein Name	Ubiquitin-conjugating enzyme E2 G2 (EC 6.3.2.19) (Ubiquitin carrier protein G2) (Ubiquitin-protein ligase G2)
Immunogen	Synthesized peptide derived from part region of human protein
Specificity	UB2G2 Monoclonal Antibody detects endogenous levels of protein.
Formulation	Liquid in PBS containing 50% glycerol, and 0.02% sodium azide.
Source	Monoclonal, Mouse,IgG
Purification	The antibody was affinity-purified from mouse antiserum by affinity-chromatography using epitope-specific immunogen.
Dilution	WB 1:500-2000
Concentration	1 mg/ml
Purity	≥90%
Storage Stability	-20°C/1 year
Synonyms	
Observed Band	18kD
Cell Pathway	Endoplasmic reticulum . Lipid droplet .
Tissue Specificity	Hippocampus,Lung,Uterus,
Function	catalytic activity:ATP + ubiquitin + protein lysine = AMP + diphosphate + protein N-ubiquityllysine.,function:Catalyzes the covalent attachment of ubiquitin to other proteins. Involved in endoplasmic reticulum-associated degradation (ERAD).,pathway:Protein modification; protein ubiquitination.,similarity:Belongs to the ubiquitin-conjugating enzyme family.,
Background	The modification of proteins with ubiquitin is an important cellular mechanism for targeting abnormal or short-lived proteins for degradation. Ubiquitination involves at least three classes of enzymes: ubiquitin-activating enzymes, or E1s, ubiquitin-conjugating enzymes, or E2s, and ubiquitin-protein ligases, or E3s. This gene encodes a member of the E2 ubiquitin-conjugating enzyme family. The encoded protein shares 100% sequence identity with the mouse counterpart. This

Nanjing BYabscience technology Co.,Ltd



gene is ubiquitously expressed, with high expression seen in adult muscle. Three alternatively spliced transcript variants encoding distinct isoforms have been found for this gene. [provided by RefSeq, Jan 2011],

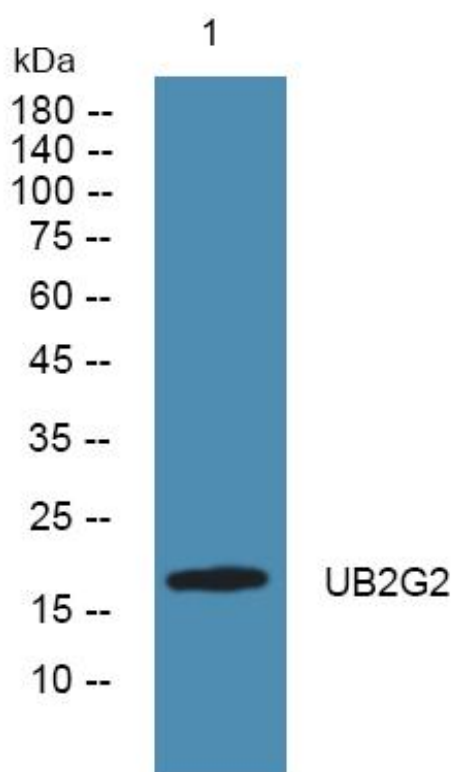
matters needing attention

Avoid repeated freezing and thawing!

Usage suggestions

This product can be used in immunological reaction related experiments. For more information, please consult technical personnel.

Products Images



Western Blot analysis of various cells using UB2G2 Monoclonal Antibody