



UB2D3 Monoclonal Antibody

Catalog No	BYmab-06357
Isotype	IgG
Reactivity	Human;Mouse;Rat
Applications	WB
Gene Name	UBE2D3 UBC5C UBCH5C
Protein Name	Ubiquitin-conjugating enzyme E2 D3 (EC 6.3.2.19) (Ubiquitin carrier protein D3) (Ubiquitin-conjugating enzyme E2(17)KB 3) (Ubiquitin-conjugating enzyme E2-17 kDa 3) (Ubiquitin-protein ligase D3)
Immunogen	Synthesized peptide derived from part region of human protein
Specificity	UB2D3 Monoclonal Antibody detects endogenous levels of protein.
Formulation	Liquid in PBS containing 50% glycerol, and 0.02% sodium azide.
Source	Monoclonal, Mouse,IgG
Purification	The antibody was affinity-purified from mouse antiserum by affinity-chromatography using epitope-specific immunogen.
Dilution	WB 1:500-2000
Concentration	1 mg/ml
Purity	≥90%
Storage Stability	-20°C/1 year
Synonyms	
Observed Band	16kD
Cell Pathway	Cell membrane ; Peripheral membrane protein . Endosome membrane ; Peripheral membrane protein .
Tissue Specificity	Brain,Placenta,
Function	catalytic activity:ATP + ubiquitin + protein lysine = AMP + diphosphate + protein N-ubiquityllysine.,function:Catalyzes the covalent attachment of ubiquitin to other proteins. Mediates the selective degradation of short-lived and abnormal proteins. Functions in the E6/E6-AP-induced ubiquitination of p53/TP53.,pathway:Protein modification; protein ubiquitination.,similarity:Belongs to the ubiquitin-conjugating enzyme family.,
Background	The modification of proteins with ubiquitin is an important cellular mechanism for targeting abnormal or short-lived proteins for degradation. Ubiquitination involves at least three classes of enzymes: ubiquitin-activating enzymes, or E1s, ubiquitin-conjugating enzymes, or E2s, and ubiquitin-protein ligases, or E3s. This

Nanjing BYabscience technology Co.,Ltd



gene encodes a member of the E2 ubiquitin-conjugating enzyme family. This enzyme functions in the ubiquitination of the tumor-suppressor protein p53, which is induced by an E3 ubiquitin-protein ligase. Multiple spliced transcript variants have been found for this gene, but the full-length nature of some variants has not been determined. [provided by RefSeq, Jul 2008],

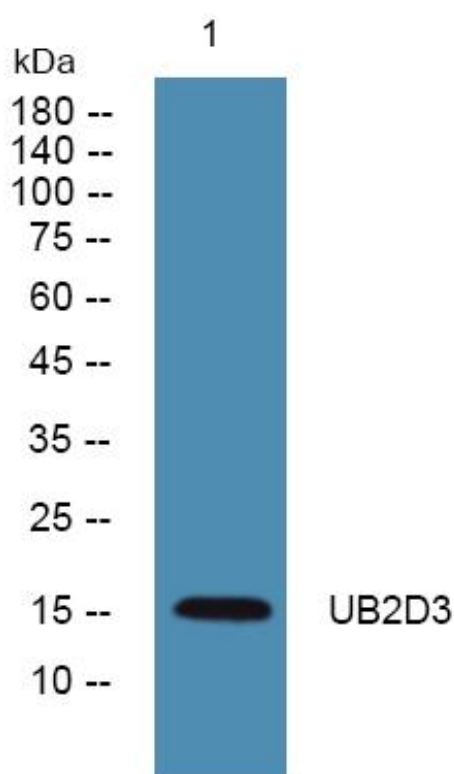
matters needing attention

Avoid repeated freezing and thawing!

Usage suggestions

This product can be used in immunological reaction related experiments. For more information, please consult technical personnel.

Products Images



Western Blot analysis of various cells using UB2D3 Monoclonal Antibody