



UB2D1 Monoclonal Antibody

Catalog No	BYmab-06356
Isotype	IgG
Reactivity	Human;Rat;Mouse
Applications	WB
Gene Name	UBE2D1 SFT UBC5A UBCH5 UBCH5A
Protein Name	Ubiquitin-conjugating enzyme E2 D1 (EC 6.3.2.19) (Stimulator of Fe transport) (SFT) (UBC4/5 homolog) (UbcH5) (Ubiquitin carrier protein D1) (Ubiquitin-conjugating enzyme E2(17)KB 1) (Ubiquitin-conjugating enzyme E2(17)KB 1)
Immunogen	Synthesized peptide derived from part region of human protein
Specificity	UB2D1 Monoclonal Antibody detects endogenous levels of protein.
Formulation	Liquid in PBS containing 50% glycerol, and 0.02% sodium azide.
Source	Monoclonal, Mouse,IgG
Purification	The antibody was affinity-purified from mouse antiserum by affinity-chromatography using epitope-specific immunogen.
Dilution	WB 1:500-2000
Concentration	1 mg/ml
Purity	≥90%
Storage Stability	-20°C/1 year
Synonyms	
Observed Band	16kD
Cell Pathway	Cytoplasm .
Tissue Specificity	Ubiquitous. Up-regulated in livers of iron-overloaded patients with hereditary hemochromatosis.
Function	catalytic activity:ATP + ubiquitin + protein lysine = AMP + diphosphate + protein N-ubiquityllysine.,caution:PubMed:9362508 cloned and sequenced SFT which consisted of UBE2D1 last coding exon along with intronic sequences on the 5'-end of this exon. A function in iron transport has been described.,function:Catalyzes the covalent attachment of ubiquitin to other proteins. Mediates the selective degradation of short-lived and abnormal proteins. Functions in the E6/E6-AP-induced ubiquitination of p53/TP53.,pathway:Protein modification; protein ubiquitination.,similarity:Belongs to the ubiquitin-conjugating enzyme family.,subunit:Component of a E3 ubiquitin ligase complex containing UBE2D1, SIAH1, CACYBP/SIP, SKP1, APC and TBL1X.,tissue

Nanjing BYabscience technology Co.,Ltd



specificity: Ubiquitous. Up-regulated in livers of iron-overloaded patients with hereditary hemochromatosis.,

Background

The modification of proteins with ubiquitin is an important cellular mechanism for targeting abnormal or short-lived proteins for degradation. Ubiquitination involves at least three classes of enzymes: ubiquitin-activating enzymes, or E1s, ubiquitin-conjugating enzymes, or E2s, and ubiquitin-protein ligases, or E3s. This gene encodes a member of the E2 ubiquitin-conjugating enzyme family. This enzyme is closely related to a stimulator of iron transport (SFT), and is up-regulated in hereditary hemochromatosis. It also functions in the ubiquitination of the tumor-suppressor protein p53 and the hypoxia-inducible transcription factor HIF1alpha by interacting with the E1 ubiquitin-activating enzyme and the E3 ubiquitin-protein ligases. Two transcript variants encoding different isoforms have been found for this gene. [provided by RefSeq, Mar 2011],

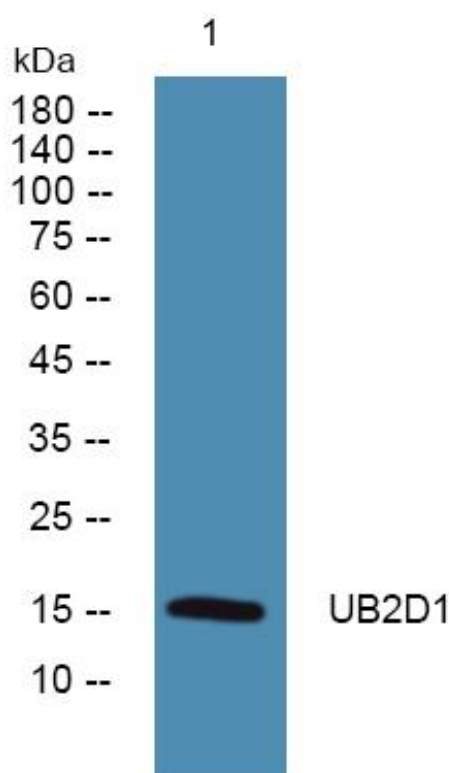
matters needing attention

Avoid repeated freezing and thawing!

Usage suggestions

This product can be used in immunological reaction related experiments. For more information, please consult technical personnel.

Products Images



Western Blot analysis of various cells using UB2D1 Monoclonal Antibody

Nanjing BYabscience technology Co.,Ltd