



TIPRL Monoclonal Antibody

| | |
|---------------------------|---|
| Catalog No | BYmab-06282 |
| Isotype | IgG |
| Reactivity | Human;Rat;Mouse |
| Applications | WB |
| Gene Name | TIPRL |
| Protein Name | TIP41-like protein (Putative MAPK-activating protein PM10) (Type 2A-interacting protein) (TIP) |
| Immunogen | Synthesized peptide derived from part region of human protein |
| Specificity | TIPRL Monoclonal Antibody detects endogenous levels of protein. |
| Formulation | Liquid in PBS containing 50% glycerol, and 0.02% sodium azide. |
| Source | Monoclonal, Mouse,IgG |
| Purification | The antibody was affinity-purified from mouse antiserum by affinity-chromatography using epitope-specific immunogen. |
| Dilution | WB 1:500-2000 |
| Concentration | 1 mg/ml |
| Purity | ≥90% |
| Storage Stability | -20°C/1 year |
| Synonyms | |
| Observed Band | 29kD |
| Cell Pathway | Cytoplasm . |
| Tissue Specificity | Fetal kidney,Lung fibroblast,Muscle, |
| Function | PTM:Phosphorylated upon DNA damage, probably by ATM or ATR.,similarity:Belongs to the TIP41 family., |
| Background | TIPRL is an inhibitory regulator of protein phosphatase-2A (PP2A) (see PPP2CA; MIM 176915), PP4 (see PPP4C; MIM 602035), and PP6 (see PPP6C; MIM 612725) (McConnell et al., 2007 [PubMed 17384681]).[supplied by OMIM, Nov 2010], |
| matters needing attention | Avoid repeated freezing and thawing! |

Nanjing BYabscience technology Co.,Ltd

网址: www.njbybio.com

官方热线: 025-5229-8998

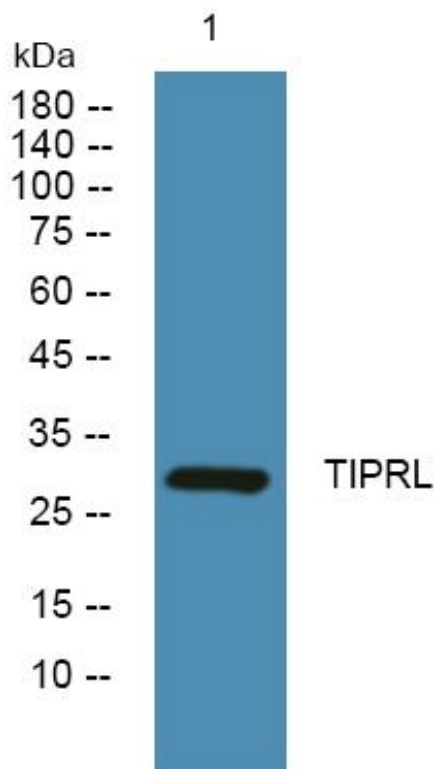
监督电话: 15950492658



Usage suggestions

This product can be used in immunological reaction related experiments. For more information, please consult technical personnel.

Products Images



Western Blot analysis of various cells using TIPRL Monoclonal Antibody

Nanjing BYabs science technology Co.,Ltd

网址: www.njbybio.com

官方热线: 025-5229-8998

监督电话: 15950492658