



STX2 Monoclonal Antibody

Catalog No	BYmab-06265
Isotype	IgG
Reactivity	Human;Rat;Mouse
Applications	WB
Gene Name	STX2 EPIM STX2A STX2B STX2C
Protein Name	Syntaxin-2 (Epimorphin)
Immunogen	Synthesized peptide derived from part region of human protein
Specificity	STX2 Monoclonal Antibody detects endogenous levels of protein.
Formulation	Liquid in PBS containing 50% glycerol, and 0.02% sodium azide.
Source	Monoclonal, Mouse,IgG
Purification	The antibody was affinity-purified from mouse antiserum by affinity-chromatography using epitope-specific immunogen.
Dilution	WB 1:500-2000
Concentration	1 mg/ml
Purity	≥90%
Storage Stability	-20°C/1 year
Synonyms	
Observed Band	31kD
Cell Pathway	Membrane; Single-pass type IV membrane protein.
Tissue Specificity	Testis,
Function	alternative products:Additional isoforms seem to exist,function:Essential for epithelial morphogenesis.,similarity:Belongs to the syntaxin family.,similarity:Contains 1 t-SNARE coiled-coil homology domain.,
Background	The product of this gene belongs to the syntaxin/epimorphin family of proteins. The syntaxins are a large protein family implicated in the targeting and fusion of intracellular transport vesicles. The product of this gene regulates epithelial-mesenchymal interactions and epithelial cell morphogenesis and activation. Alternatively spliced transcript variants encoding different isoforms have been identified. [provided by RefSeq, Jul 2008],

Nanjing BYabscience technology Co.,Ltd

网址: www.njbybio.com

官方热线: 025-5229-8998

监督电话: 15950492658



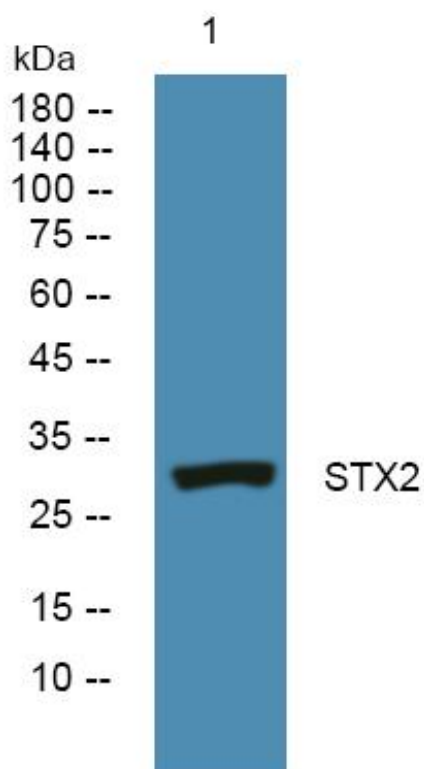
matters needing attention

Avoid repeated freezing and thawing!

Usage suggestions

This product can be used in immunological reaction related experiments. For more information, please consult technical personnel.

Products Images



Western Blot analysis of various cells using STX2 Monoclonal Antibody