



# SYT4 Monoclonal Antibody

<b>Catalog No</b>	BYmab-06259
<b>Isotype</b>	IgG
<b>Reactivity</b>	Human;Rat;Mouse;
<b>Applications</b>	WB
<b>Gene Name</b>	SYT4 KIAA1342
<b>Protein Name</b>	Synaptotagmin-4 (Synaptotagmin IV) (SytIV)
<b>Immunogen</b>	Synthesized peptide derived from part region of human protein
<b>Specificity</b>	SYT4 Monoclonal Antibody detects endogenous levels of protein.
<b>Formulation</b>	Liquid in PBS containing 50% glycerol, and 0.02% sodium azide.
<b>Source</b>	Monoclonal, Mouse,IgG
<b>Purification</b>	The antibody was affinity-purified from mouse antiserum by affinity-chromatography using epitope-specific immunogen.
<b>Dilution</b>	WB 1:500-2000
<b>Concentration</b>	1 mg/ml
<b>Purity</b>	≥90%
<b>Storage Stability</b>	-20°C/1 year
<b>Synonyms</b>	
<b>Observed Band</b>	46kD
<b>Cell Pathway</b>	Cytoplasmic vesicle, secretory vesicle, neuronal dense core vesicle membrane ; Single-pass membrane protein .
<b>Tissue Specificity</b>	Expressed in melanocytes (PubMed:23999003). Expressed in brain. Within brain, expression is highest in hippocampus, with substantial levels also detected in amygdala and thalamus (PubMed:23999003).
<b>Function</b>	cofactor: Binds 3 calcium ions per subunit. The ions are bound to the C2 domains.,function: May be involved in Ca(2+)-dependent exocytosis of secretory vesicles through Ca(2+) and phospholipid binding to the C2 domain or may serve as Ca(2+) sensors in the process of vesicular trafficking and exocytosis.,similarity: Belongs to the synaptotagmin family.,similarity: Contains 2 C2 domains.,tissue specificity: Expressed in brain. Within brain, expression is highest in hippocampus, with substantial levels also detected in amygdala and thalamus.,
<b>Background</b>	cofactor: Binds 3 calcium ions per subunit. The ions are bound to the C2 domains.,function: May be involved in Ca(2+)-dependent exocytosis of secretory

**Nanjing BYabscience technology Co.,Ltd**



vesicles through  $\text{Ca}^{2+}$  and phospholipid binding to the C2 domain or may serve as  $\text{Ca}^{2+}$  sensors in the process of vesicular trafficking and exocytosis.,similarity:Belongs to the synaptotagmin family.,similarity:Contains 2 C2 domains.,tissue specificity:Expressed in brain. Within brain, expression is highest in hippocampus, with substantial levels also detected in amygdala and thalamus.,

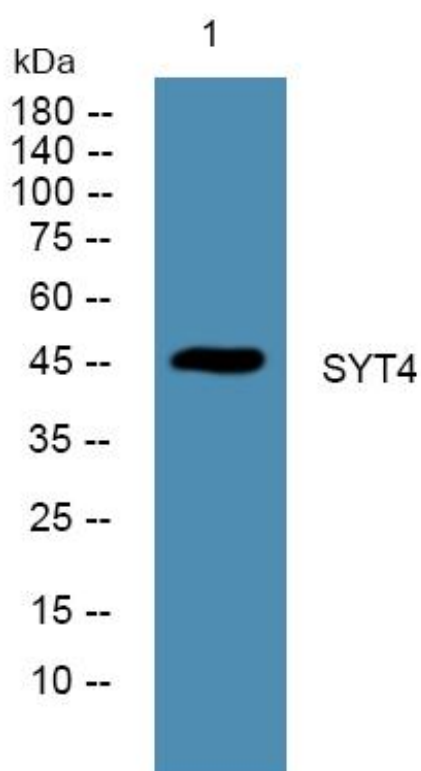
**matters needing attention**

Avoid repeated freezing and thawing!

**Usage suggestions**

This product can be used in immunological reaction related experiments. For more information, please consult technical personnel.

## Products Images



Western Blot analysis of various cells using SYT4 Monoclonal Antibody