



SL9A2 Monoclonal Antibody

Catalog No	BYmab-06209
Isotype	IgG
Reactivity	Human;Rat
Applications	WB
Gene Name	SLC9A2 NHE2
Protein Name	Sodium/hydrogen exchanger 2 (Na ⁺)/H ⁺ exchanger 2) (NHE-2) (Solute carrier family 9 member 2)
Immunogen	Synthesized peptide derived from part region of human protein
Specificity	SL9A2 Monoclonal Antibody detects endogenous levels of protein.
Formulation	Liquid in PBS containing 50% glycerol, and 0.02% sodium azide.
Source	Monoclonal, Mouse,IgG
Purification	The antibody was affinity-purified from mouse antiserum by affinity-chromatography using epitope-specific immunogen.
Dilution	WB 1:500-2000
Concentration	1 mg/ml
Purity	≥90%
Storage Stability	-20°C/1 year
Synonyms	
Observed Band	89kD
Cell Pathway	Membrane; Multi-pass membrane protein.
Tissue Specificity	Expressed in skeletal muscle, colon and kidney. Lower levels in the testis, prostate, ovary, and small intestine.
Function	caution:The number, localization and denomination of hydrophobic domains in the Na ⁺ /H ⁺ exchangers vary among authors.,function:Involved in pH regulation to eliminate acids generated by active metabolism or to counter adverse environmental conditions. Major proton extruding system driven by the inward sodium ion chemical gradient. Seems to play an important role in colonic sodium absorption.,PTM:Phosphorylated (Possible).,similarity:Belongs to the monovalent cation:proton antiporter 1 (CPA1) transporter (TC 2.A.36) family.,tissue specificity:Expressed in skeletal muscle, colon and kidney. Lower levels in the testis, prostate, ovary, and small intestine.,
Background	This gene encodes a member of the sodium-hydrogen exchanger (NHE) protein family. These proteins are involved in sodium-ion transport by exchanging

Nanjing BYabscience technology Co.,Ltd



intracellular hydrogen ions to external sodium ions and help in the regulation of cell pH and volume. The encoded protein is localized to the apical membrane and is involved in apical absorption of sodium. [provided by RefSeq, Jun 2016],

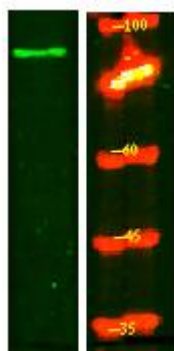
matters needing attention

Avoid repeated freezing and thawing!

Usage suggestions

This product can be used in immunological reaction related experiments. For more information, please consult technical personnel.

Products Images



Western Blot analysis of various cells using SL9A2 Monoclonal Antibody