



SCN1B Monoclonal Antibody

Catalog No	BYmab-06203
Isotype	IgG
Reactivity	Human;Rat;Mouse
Applications	WB
Gene Name	SCN1B
Protein Name	Sodium channel subunit beta-1
Immunogen	Synthesized peptide derived from part region of human protein
Specificity	SCN1B Monoclonal Antibody detects endogenous levels of protein.
Formulation	Liquid in PBS containing 50% glycerol, and 0.02% sodium azide.
Source	Monoclonal, Mouse,IgG
Purification	The antibody was affinity-purified from mouse antiserum by affinity-chromatography using epitope-specific immunogen.
Dilution	WB 1:500-2000
Concentration	1 mg/ml
Purity	≥90%
Storage Stability	-20°C/1 year
Synonyms	
Observed Band	23kD
Cell Pathway	[Isoform 1]: Cell membrane ; Single-pass type I membrane protein . Perikaryon . Cell projection . Cell projection, axon . Detected at nodes of Ranvier on the sciatic nerve. . ; [Isoform 2]: Perikaryon . Cell projection . Secreted . Detected on Purkinje cells and their cell projections and on neuronal cell projections. .
Tissue Specificity	The overall expression of isoform 1 and isoform 2 is very similar. Isoform 1 is abundantly expressed in skeletal muscle, heart and brain. Isoform 2 is highly expressed in brain and skeletal muscle and present at a very low level in heart, placenta, lung, liver, kidney and pancreas. In brain, isoform 2 is most abundant in the cerebellum, followed by the cerebral cortex and occipital lobe, while isoform 1 levels are higher in the cortex compared to the cerebellum. Isoform 2 is expressed in many regions of the brain, including cerebellar Purkinje cells, cortex pyramidal neurons and many of the neuronal fibers throughout the brain (at protein level). Also detected in dorsal root ganglion, in fibers of the spinal nerve and in cortical neurons and their processes (at protein level).
Function	disease:Defects in SCN1B are the cause of generalized epilepsy with febrile

Nanjing BYabscience technology Co.,Ltd



seizures plus type 1 (GEFS+1) [MIM:604233]. Generalized epilepsy with febrile seizures-plus refers to a rare autosomal dominant, familial condition with incomplete penetrance and large intrafamilial variability. Patients display febrile seizures persisting sometimes beyond the age of 6 years and/or a variety of afebrile seizure types. GEFS+ is a disease combining febrile seizures, generalized seizures often precipitated by fever at age 6 years or more, and partial seizures, with a variable degree of severity. function:Crucial in the assembly, expression, and functional modulation of the heterotrimeric complex of the sodium channel. The subunit beta-1 can modulate multiple alpha subunit isoforms from brain, skeletal muscle, and heart. Its association with neurofascin may target the sodium channels to the nodes of

Background

Voltage-gated sodium channels are heteromeric proteins that function in the generation and propagation of action potentials in muscle and neuronal cells. They are composed of one alpha and two beta subunits, where the alpha subunit provides channel activity and the beta-1 subunit modulates the kinetics of channel inactivation. This gene encodes a sodium channel beta-1 subunit. Mutations in this gene result in generalized epilepsy with febrile seizures plus, Brugada syndrome 5, and defects in cardiac conduction. Multiple transcript variants encoding different isoforms have been found for this gene.[provided by RefSeq, Oct 2009],

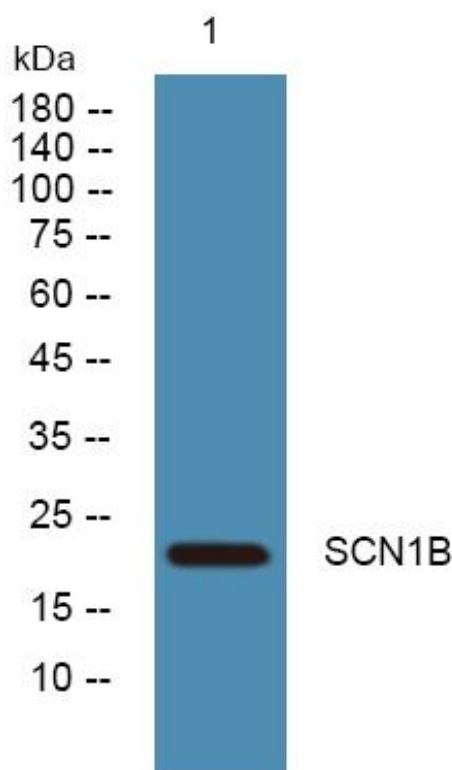
matters needing attention

Avoid repeated freezing and thawing!

Usage suggestions

This product can be used in immunological reaction related experiments. For more information, please consult technical personnel.

Products Images



Western Blot analysis of various cells using SCN1B Monoclonal Antibody

Nanjing BYabscience technology Co.,Ltd