



SCNM1 Monoclonal Antibody

Catalog No	BYmab-06199
Isotype	IgG
Reactivity	Human;Rat;Mouse;
Applications	WB
Gene Name	SCNM1
Protein Name	Sodium channel modifier 1
Immunogen	Synthesized peptide derived from part region of human protein
Specificity	SCNM1 Monoclonal Antibody detects endogenous levels of protein.
Formulation	Liquid in PBS containing 50% glycerol, and 0.02% sodium azide.
Source	Monoclonal, Mouse,IgG
Purification	The antibody was affinity-purified from mouse antiserum by affinity-chromatography using epitope-specific immunogen.
Dilution	WB 1:500-2000
Concentration	1 mg/ml
Purity	≥90%
Storage Stability	-20°C/1 year
Synonyms	
Observed Band	25kD
Cell Pathway	Nucleus, nucleoplasm . Nucleus speckle . Colocalizes with LUC7L2 and SNRNP70 in nuclear speckles. .
Tissue Specificity	Eye,
Function	function:May function as a RNA splicing factor.,similarity:Contains 1 matrin-type zinc finger.,
Background	SCNM1 is a zinc finger protein and putative splicing factor. In mice, Scnm1 modifies phenotypic expression of Scn8a (MIM 600702) mutations (Buchner et al., 2003 [PubMed 12920299]).[supplied by OMIM, Oct 2009],
matters needing attention	Avoid repeated freezing and thawing!

Nanjing BYabscience technology Co.,Ltd

网址: www.njbybio.com

官方热线: 025-5229-8998

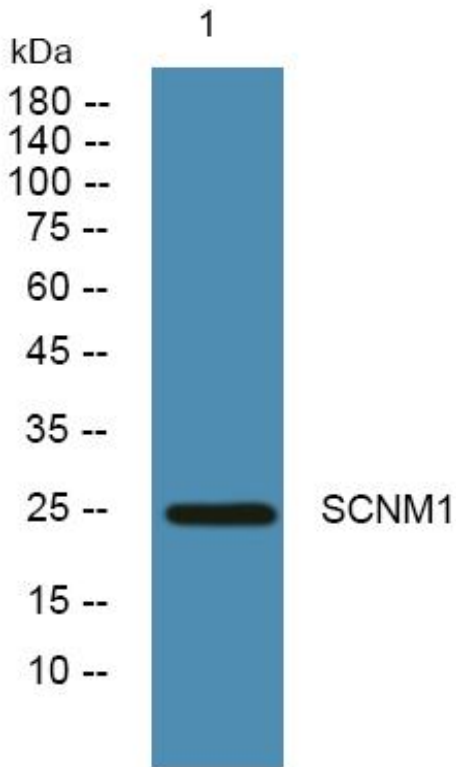
监督电话: 15950492658



Usage suggestions

This product can be used in immunological reaction related experiments. For more information, please consult technical personnel.

Products Images



Western Blot analysis of various cells using SCNM1 Monoclonal Antibody