



CCL1 Monoclonal Antibody

Catalog No	BYmab-06187
Isotype	IgG
Reactivity	Human;Rat;Mouse;
Applications	WB
Gene Name	CCL1 SCYA1
Protein Name	C-C motif chemokine 1 (Small-inducible cytokine A1) (T lymphocyte-secreted protein I-309)
Immunogen	Synthesized peptide derived from human protein . at AA range: 20-100
Specificity	CCL1 Monoclonal Antibody detects endogenous levels of protein.
Formulation	Liquid in PBS containing 50% glycerol, and 0.02% sodium azide.
Source	Monoclonal, Mouse,IgG
Purification	The antibody was affinity-purified from mouse antiserum by affinity-chromatography using epitope-specific immunogen.
Dilution	WB 1:500-2000
Concentration	1 mg/ml
Purity	≥90%
Storage Stability	-20°C/1 year
Synonyms	
Observed Band	10kD
Cell Pathway	Secreted.
Tissue Specificity	Brain,
Function	function:Cytokine that is chemotactic for monocytes but not for neutrophils. Binds to CCR8.,induction:By PMA.,online information:CCL1 entry,similarity:Belongs to the intercrine beta (chemokine CC) family.,subunit:Monomer.,
Background	This antimicrobial gene is one of several chemokine genes clustered on the q-arm of chromosome 17. Chemokines form a superfamily of secreted proteins involved in immunoregulatory and inflammatory processes. The superfamily is divided into four subfamilies based on the arrangement of the N-terminal cysteine residues of the mature peptide. This chemokine, a member of the CC subfamily, is secreted by activated T cells and displays chemotactic activity for monocytes but not for neutrophils. It binds to the chemokine (C-C motif) receptor 8. [provided by RefSeq, Sep 2014],

Nanjing BYabscience technology Co.,Ltd



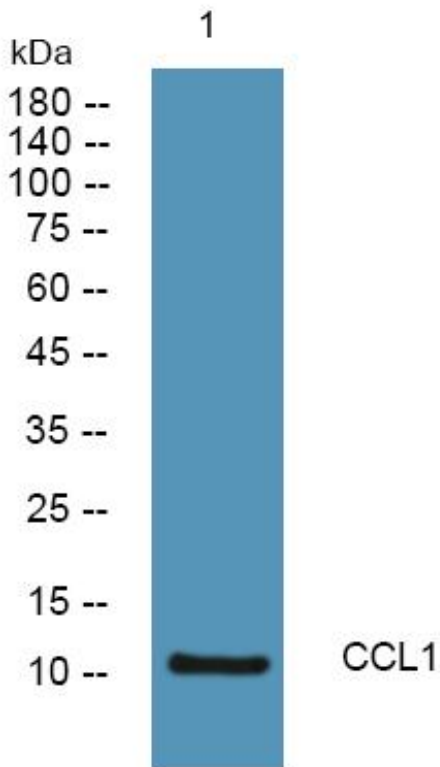
matters needing attention

Avoid repeated freezing and thawing!

Usage suggestions

This product can be used in immunological reaction related experiments. For more information, please consult technical personnel.

Products Images



Western Blot analysis of various cells using CCL1 Monoclonal Antibody