



SSA27 Monoclonal Antibody

Catalog No	BYmab-06185
Isotype	IgG
Reactivity	Human;Mouse
Applications	WB
Gene Name	SSSCA1
Protein Name	Sjogren syndrome/scleroderma autoantigen 1 (Autoantigen p27)
Immunogen	Synthesized peptide derived from part region of human protein
Specificity	SSA27 Monoclonal Antibody detects endogenous levels of protein.
Formulation	Liquid in PBS containing 50% glycerol, and 0.02% sodium azide.
Source	Monoclonal, Mouse,IgG
Purification	The antibody was affinity-purified from mouse antiserum by affinity-chromatography using epitope-specific immunogen.
Dilution	WB 1:500-2000
Concentration	1 mg/ml
Purity	≥90%
Storage Stability	-20°C/1 year
Synonyms	
Observed Band	21kD
Cell Pathway	
Tissue Specificity	Ovary,
Function	function:Might play a role in mitosis. Antigenic molecule. Could be a centromere-associated protein. May induce anti-centromere antibodies.,PTM:Phosphorylated upon DNA damage, probably by ATM or ATR.,
Background	This antigen is recognized by a subset of anti-centromere antibodies from patients with scleroderma and/or Sjogren's syndrome. Subcellular localization has not yet been established. [provided by RefSeq, Jul 2008],
matters needing attention	Avoid repeated freezing and thawing!

Nanjing BYabscience technology Co.,Ltd

网址: www.njbybio.com

官方热线: 025-5229-8998

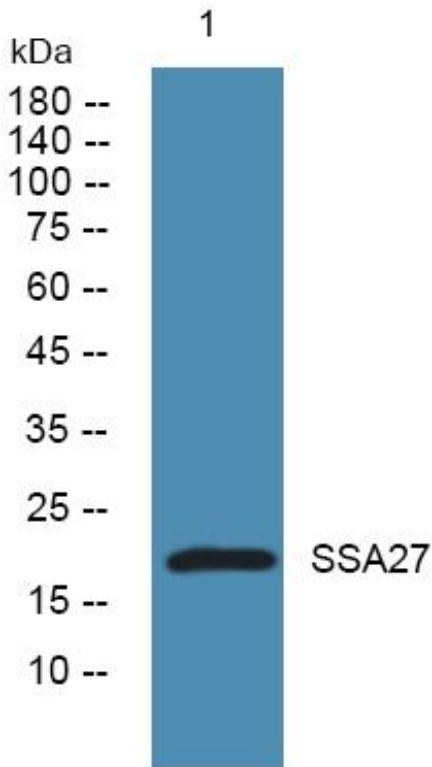
监督电话: 15950492658



Usage suggestions

This product can be used in immunological reaction related experiments. For more information, please consult technical personnel.

Products Images



Western Blot analysis of various cells using SSA27 Monoclonal Antibody