



# SGMR1 Monoclonal Antibody

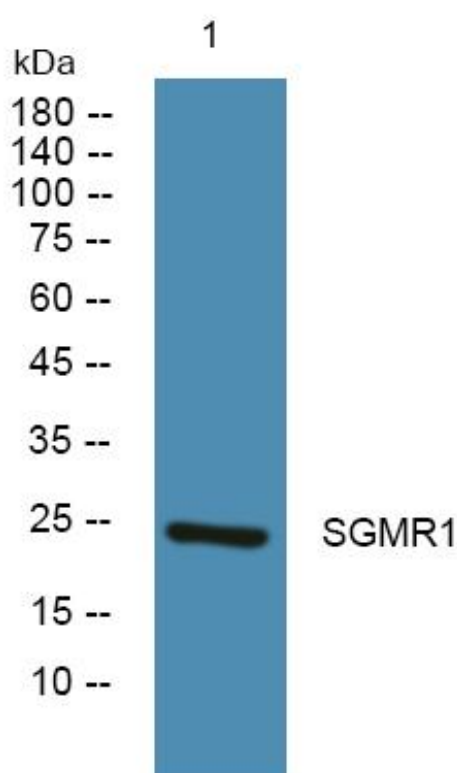
<b>Catalog No</b>	BYmab-06183
<b>Isotype</b>	IgG
<b>Reactivity</b>	Human;Rat;Mouse
<b>Applications</b>	WB
<b>Gene Name</b>	SIGMAR1 OPRS1 SRBP AAG8
<b>Protein Name</b>	Sigma non-opioid intracellular receptor 1 (Aging-associated gene 8 protein) (SR31747-binding protein) (SR-BP) (Sigma 1-type opioid receptor) (SIG-1R) (Sigma1-receptor) (Sigma1R) (hSigmaR1)
<b>Immunogen</b>	Synthesized peptide derived from human protein . at AA range: 90-170
<b>Specificity</b>	SGMR1 Monoclonal Antibody detects endogenous levels of protein.
<b>Formulation</b>	Liquid in PBS containing 50% glycerol, and 0.02% sodium azide.
<b>Source</b>	Monoclonal, Mouse,IgG
<b>Purification</b>	The antibody was affinity-purified from mouse antiserum by affinity-chromatography using epitope-specific immunogen.
<b>Dilution</b>	WB 1:500-2000
<b>Concentration</b>	1 mg/ml
<b>Purity</b>	≥90%
<b>Storage Stability</b>	-20°C/1 year
<b>Synonyms</b>	
<b>Observed Band</b>	24kD
<b>Cell Pathway</b>	Nucleus inner membrane . Nucleus outer membrane . Nucleus envelope . Cytoplasmic vesicle . Endoplasmic reticulum membrane . Membrane ; Single-pass membrane protein . Lipid droplet . Cell junction. Cell membrane . Cell projection, growth cone. Cell junction, synapse, postsynaptic density membrane . During interphase, detected at the inner and outer nuclear membrane and the endoplasmic reticulum. Detected on cytoplasmic vesicles during mitosis (PubMed:10406945). Targeted to lipid droplets, cholesterol and galactosylceramide-enriched domains of the endoplasmic reticulum. Accumulation at the endoplasmic reticulum is prominent in alpha-motor neurons of patients with amyotrophic lateral sclerosis (PubMed:23314020). Enriched at cell-cell communication regions, growth cone and postsynaptic structu
<b>Tissue Specificity</b>	Widely expressed with higher expression in liver, colon, prostate, placenta, small intestine, heart and pancreas. Expressed in the retina by retinal pigment epithelial cells. Expressed in alpha-motor neurons (PubMed:23314020).

**Nanjing BYabscience technology Co.,Ltd**



<b>Function</b>	function:Functions in lipid transport from the endoplasmic reticulum and is involved in a wide array of cellular functions probably through regulation of the biogenesis of lipid microdomains at the plasma membrane. Involved in the regulation of different receptors it plays a role in BDNF signaling and EGF signaling. Also regulates ion channels like the potassium channel and could modulate neurotransmitter release. Plays a role in calcium signaling through modulation together with ANK2 of the ITP3R-dependent calcium efflux at the endoplasmic reticulum. Plays a role in several other cell functions including proliferation, survival and death. Originally identified for its ability to bind various psychoactive drugs it is involved in learning processes, memory and mood alteration.,miscellaneous:Depletion of OPRS1 by RNAi inhibits growth and survival signaling cascades and induces cell death.
<b>Background</b>	This gene encodes a receptor protein that interacts with a variety of psychotomimetic drugs, including cocaine and amphetamines. The receptor is believed to play an important role in the cellular functions of various tissues associated with the endocrine, immune, and nervous systems. As indicated by its previous name, opioid receptor sigma 1 (OPRS1), the product of this gene was erroneously thought to function as an opioid receptor; it is now thought to be a non-opioid receptor. Mutations in this gene has been associated with juvenile amyotrophic lateral sclerosis 16. Alternative splicing of this gene results in transcript variants encoding distinct isoforms. [provided by RefSeq, Aug 2013],
<b>matters needing attention</b>	Avoid repeated freezing and thawing!
<b>Usage suggestions</b>	This product can be used in immunological reaction related experiments. For more information, please consult technical personnel.

## Products Images



Western Blot analysis of various cells using SGMR1 Monoclonal Antibody

Nanjing BYabscience technology Co.,Ltd