



# SH3G3 Monoclonal Antibody

<b>Catalog No</b>	BYmab-06179
<b>Isotype</b>	IgG
<b>Reactivity</b>	Human;Rat;Mouse
<b>Applications</b>	WB
<b>Gene Name</b>	SH3GL3 CNSA3 SH3D2C
<b>Protein Name</b>	Endophilin-A3 (EEN-B2) (Endophilin-3) (SH3 domain protein 2C) (SH3 domain-containing GRB2-like protein 3)
<b>Immunogen</b>	Synthesized peptide derived from part region of human protein
<b>Specificity</b>	SH3G3 Monoclonal Antibody detects endogenous levels of protein.
<b>Formulation</b>	Liquid in PBS containing 50% glycerol, and 0.02% sodium azide.
<b>Source</b>	Monoclonal, Mouse,IgG
<b>Purification</b>	The antibody was affinity-purified from mouse antiserum by affinity-chromatography using epitope-specific immunogen.
<b>Dilution</b>	WB 1:500-2000
<b>Concentration</b>	1 mg/ml
<b>Purity</b>	≥90%
<b>Storage Stability</b>	-20°C/1 year
<b>Synonyms</b>	
<b>Observed Band</b>	38kD
<b>Cell Pathway</b>	Cytoplasm . Early endosome membrane ; Peripheral membrane protein . Associated with postsynaptic endosomes in hippocampal neurons. Associated with presynaptic endosomes in olfactory neurons. .
<b>Tissue Specificity</b>	Brain and testis.
<b>Function</b>	domain:An N-terminal amphipathic helix, the BAR domain and a second amphipathic helix inserted into helix 1 of the BAR domain (N-BAR domain) induce membrane curvature and bind curved membranes.,function:Implicated in endocytosis. May recruit other proteins to membranes with high curvature.,similarity:Belongs to the endophilin family.,similarity:Contains 1 BAR domain.,similarity:Contains 1 SH3 domain.,subcellular location:Associated with postsynaptic endosomes in hippocampal neurons. Associated with presynaptic endosomes in olfactory neurons.,subunit:Interacts with ARC (By similarity). Interacts with DNM1, SGIP1 and SYNJ1. Interacts with the huntingtin exon 1 protein (HDEX1P) containing a glutamine repeat in the pathological range and

**Nanjing BYabscience technology Co.,Ltd**



promotes formation of insoluble polyglutamine-containing aggregates in vivo.,tissue specificity:Brain and testis.,

## Background

domain:An N-terminal amphipathic helix, the BAR domain and a second amphipathic helix inserted into helix 1 of the BAR domain (N-BAR domain) induce membrane curvature and bind curved membranes.,function:Implicated in endocytosis. May recruit other proteins to membranes with high curvature.,similarity:Belongs to the endophilin family.,similarity:Contains 1 BAR domain.,similarity:Contains 1 SH3 domain.,subcellular location:Associated with postsynaptic endosomes in hippocampal neurons. Associated with presynaptic endosomes in olfactory neurons.,subunit:Interacts with ARC (By similarity). Interacts with DNM1, SGIP1 and SYNJ1. Interacts with the huntingtin exon 1 protein (HDEX1P) containing a glutamine repeat in the pathological range and promotes formation of insoluble polyglutamine-containing aggregates in vivo.,tissue specificity:Brain and testis.,

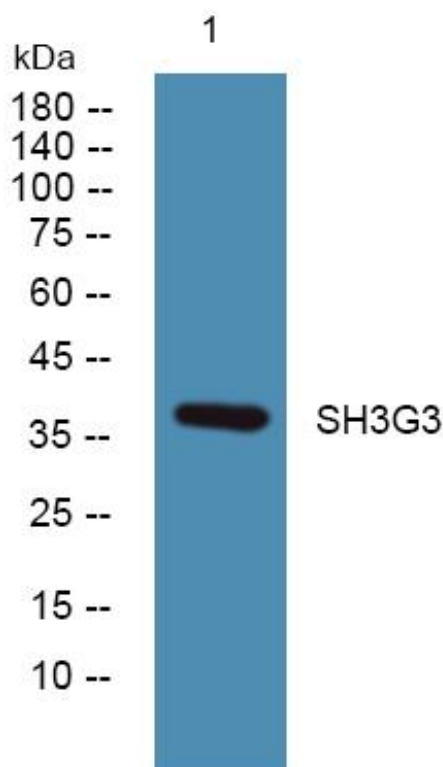
## matters needing attention

Avoid repeated freezing and thawing!

## Usage suggestions

This product can be used in immunological reaction related experiments. For more information, please consult technical personnel.

## Products Images



Western Blot analysis of various cells using SH3G3 Monoclonal Antibody