



SASH3 Monoclonal Antibody

Catalog No	BYmab-06178
Isotype	IgG
Reactivity	Human;Mouse
Applications	WB
Gene Name	SASH3 CXorf9 SLY
Protein Name	SAM and SH3 domain-containing protein 3 (SH3 protein expressed in lymphocytes homolog)
Immunogen	Synthesized peptide derived from part region of human protein
Specificity	SASH3 Monoclonal Antibody detects endogenous levels of protein.
Formulation	Liquid in PBS containing 50% glycerol, and 0.02% sodium azide.
Source	Monoclonal, Mouse,IgG
Purification	The antibody was affinity-purified from mouse antiserum by affinity-chromatography using epitope-specific immunogen.
Dilution	WB 1:500-2000
Concentration	1 mg/ml
Purity	≥90%
Storage Stability	-20°C/1 year
Synonyms	
Observed Band	41kD
Cell Pathway	nucleus,cytoplasm,
Tissue Specificity	Spleen,Testis,
Function	function:May function as a signaling adapter protein in lymphocytes.,similarity:Contains 1 SAM (sterile alpha motif) domain.,similarity:Contains 1 SH3 domain.,
Background	The protein encoded by this gene contains a Src homology-3 (SH3) domain and a sterile alpha motif (SAM), both of which are found in proteins involved in cell signaling. This protein may function as a signaling adapter protein in lymphocytes.[provided by RefSeq, Sep 2009],
matters needing attention	Avoid repeated freezing and thawing!

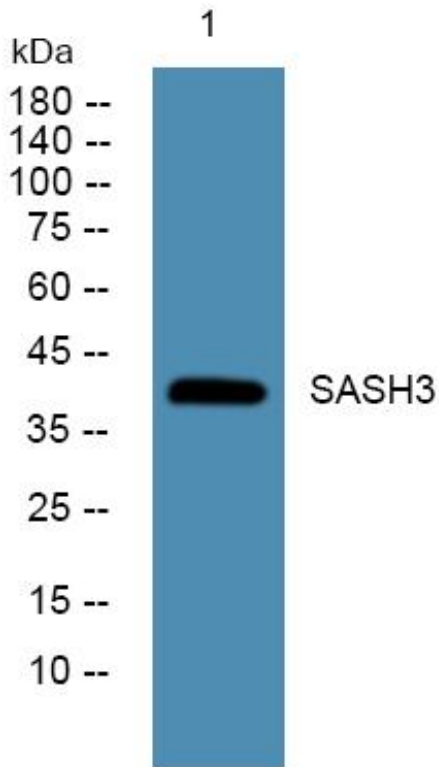
Nanjing BYabscience technology Co.,Ltd



Usage suggestions

This product can be used in immunological reaction related experiments. For more information, please consult technical personnel.

Products Images



Western Blot analysis of various cells using SASH3 Monoclonal Antibody

Nanjing BYabs science technology Co.,Ltd

网址: www.njbybio.com

官方热线: 025-5229-8998

监督电话: 15950492658