



# SH3L1 Monoclonal Antibody

Catalog No	BYmab-06173
Isotype	IgG
Reactivity	Human;Mouse
Applications	WB
Gene Name	SH3BGRL
Protein Name	SH3 domain-binding glutamic acid-rich-like protein
Immunogen	Synthesized peptide derived from part region of human protein AA range: 1-50
Specificity	SH3L1 Monoclonal Antibody detects endogenous levels of protein.
Formulation	Liquid in PBS containing 50% glycerol, and 0.02% sodium azide.
Source	Monoclonal, Mouse,IgG
Purification	The antibody was affinity-purified from mouse antiserum by affinity-chromatography using epitope-specific immunogen.
Dilution	WB 1:500-2000
Concentration	1 mg/ml
Purity	≥90%
Storage Stability	-20°C/1 year
Synonyms	
Observed Band	12kD
Cell Pathway	extracellular space,nucleus,cytoplasm,extracellular exosome,
Tissue Specificity	Ubiquitous.
Function	similarity:Belongs to the SH3BGR family.,tissue specificity:Ubiquitous.,
Background	similarity:Belongs to the SH3BGR family.,tissue specificity:Ubiquitous.,
matters needing attention	Avoid repeated freezing and thawing!
Usage suggestions	This product can be used in immunological reaction related experiments. For more information, please consult technical personnel.

Nanjing BYabscience technology Co.,Ltd

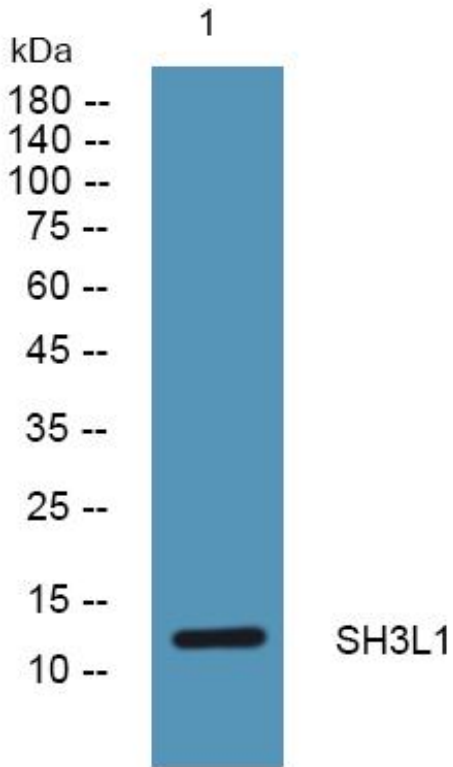
网址: [www.njbybio.com](http://www.njbybio.com)

官方热线: 025-5229-8998

监督电话: 15950492658



## Products Images



Western Blot analysis of various cells using SH3L1  
Monoclonal Antibody