



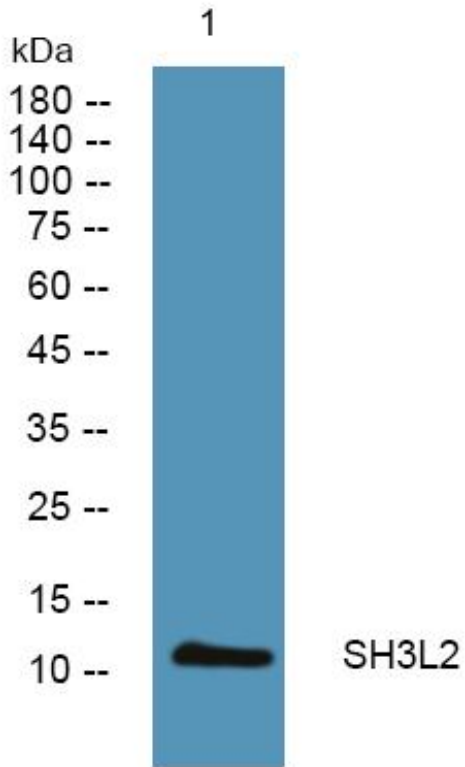
# SH3L2 Monoclonal Antibody

Catalog No	BYmab-06171
Isotype	IgG
Reactivity	Human;Mouse
Applications	WB
Gene Name	SH3BGRL2 FASH3
Protein Name	SH3 domain-binding glutamic acid-rich-like protein 2 (Fovea-associated SH3 domain-binding protein)
Immunogen	Synthesized peptide derived from part region of human protein AA range: 1-50
Specificity	SH3L2 Monoclonal Antibody detects endogenous levels of protein.
Formulation	Liquid in PBS containing 50% glycerol, and 0.02% sodium azide.
Source	Monoclonal, Mouse,IgG
Purification	The antibody was affinity-purified from mouse antiserum by affinity-chromatography using epitope-specific immunogen.
Dilution	WB 1:500-2000
Concentration	1 mg/ml
Purity	≥90%
Storage Stability	-20°C/1 year
Synonyms	
Observed Band	11kD
Cell Pathway	Nucleus .
Tissue Specificity	Highly expressed in brain, placenta, liver and kidney. Expressed in retina.
Function	similarity:Belongs to the SH3BGR family.,tissue specificity:Highly expressed in brain, placenta, liver and kidney. Expressed in retina.,
Background	similarity:Belongs to the SH3BGR family.,tissue specificity:Highly expressed in brain, placenta, liver and kidney. Expressed in retina.,
matters needing attention	Avoid repeated freezing and thawing!
Usage suggestions	This product can be used in immunological reaction related experiments. For more information, please consult technical personnel.

Nanjing BYabscience technology Co.,Ltd



## Products Images



Western Blot analysis of various cells using SH3L2  
Monoclonal Antibody

Nanjing BYabs science technology Co.,Ltd

网址: [www.njbybio.com](http://www.njbybio.com)

官方热线: 025-5229-8998

监督电话: 15950492658