



# SPI2 Monoclonal Antibody

Catalog No	BYmab-06160
Isotype	IgG
Reactivity	Human;Mouse
Applications	WB
Gene Name	SERPINI2 MEPI PI14
Protein Name	Serpin I2 (Myoepithelium-derived serine protease inhibitor) (Pancpin) (Pancreas-specific protein TSA2004) (Peptidase inhibitor 14) (PI-14)
Immunogen	Synthesized peptide derived from part region of human protein
Specificity	SPI2 Monoclonal Antibody detects endogenous levels of protein.
Formulation	Liquid in PBS containing 50% glycerol, and 0.02% sodium azide.
Source	Monoclonal, Mouse,IgG
Purification	The antibody was affinity-purified from mouse antiserum by affinity-chromatography using epitope-specific immunogen.
Dilution	WB 1:500-2000
Concentration	1 mg/ml
Purity	≥90%
Storage Stability	-20°C/1 year
Synonyms	
Observed Band	44kD
Cell Pathway	Secreted .
Tissue Specificity	Expressed in pancreas and adipose tissues.
Function	similarity:Belongs to the serpin family.,tissue specificity:Expressed in pancreas and adipose tissues.,
Background	The gene encodes a member of a family of proteins that acts as inhibitors of serine proteases. These proteins function in the regulation of a variety of physiological processes, including coagulation, fibrinolysis, development, malignancy, and inflammation. Expression of the encoded protein may be downregulated during pancreatic carcinogenesis. Alternative splicing results in multiple transcript variants for this gene. [provided by RefSeq, Jan 2013],
matters needing attention	Avoid repeated freezing and thawing!

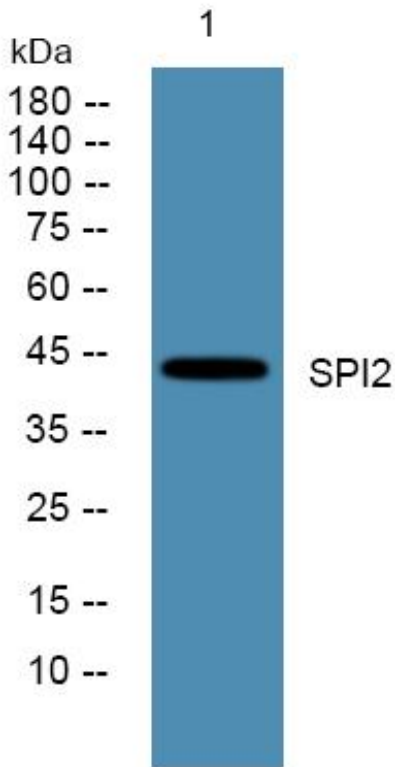
Nanjing BYabscience technology Co.,Ltd



### Usage suggestions

This product can be used in immunological reaction related experiments. For more information, please consult technical personnel.

## Products Images



Western Blot analysis of various cells using SPI2 Monoclonal Antibody

Nanjing BYabs science technology Co.,Ltd

网址: [www.njbybio.com](http://www.njbybio.com)

官方热线: 025-5229-8998

监督电话: 15950492658