



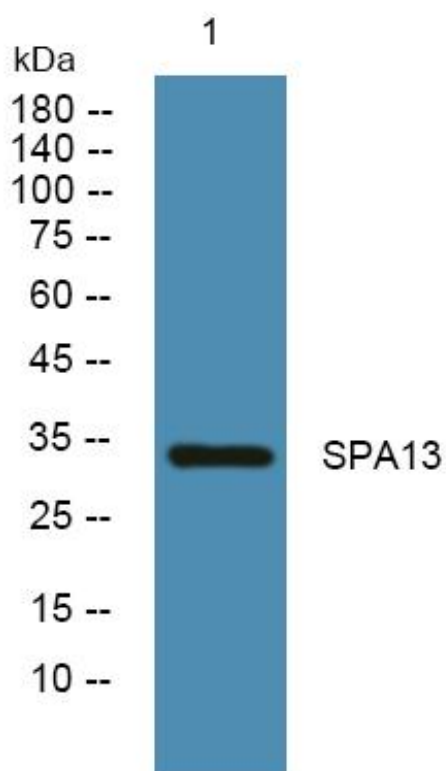
SPA13 Monoclonal Antibody

Catalog No	BYmab-06156
Isotype	IgG
Reactivity	Human;Rat;Mouse;
Applications	WB
Gene Name	SERPINA13 UNQ6121/PRO20043
Protein Name	Putative serpin A13
Immunogen	Synthesized peptide derived from part region of human protein
Specificity	SPA13 Monoclonal Antibody detects endogenous levels of protein.
Formulation	Liquid in PBS containing 50% glycerol, and 0.02% sodium azide.
Source	Monoclonal, Mouse,IgG
Purification	The antibody was affinity-purified from mouse antiserum by affinity-chromatography using epitope-specific immunogen.
Dilution	WB 1:500-2000
Concentration	1 mg/ml
Purity	≥90%
Storage Stability	-20°C/1 year
Synonyms	
Observed Band	33kD
Cell Pathway	Secreted .
Tissue Specificity	
Function	
Background	
matters needing attention	Avoid repeated freezing and thawing!
Usage suggestions	This product can be used in immunological reaction related experiments. For more information, please consult technical personnel.

Nanjing BYabscience technology Co.,Ltd



Products Images



Western Blot analysis of various cells using SPA13 Monoclonal Antibody