



SPA12 Monoclonal Antibody

Catalog No	BYmab-06155
Isotype	IgG
Reactivity	Human;Rat;Mouse
Applications	WB
Gene Name	SERPINA12
Protein Name	Serpin A12 (OL-64) (Visceral adipose tissue-derived serine protease inhibitor) (Vaspin) (Visceral adipose-specific serpin)
Immunogen	Synthesized peptide derived from part region of human protein
Specificity	SPA12 Monoclonal Antibody detects endogenous levels of protein.
Formulation	Liquid in PBS containing 50% glycerol, and 0.02% sodium azide.
Source	Monoclonal, Mouse,IgG
Purification	The antibody was affinity-purified from mouse antiserum by affinity-chromatography using epitope-specific immunogen.
Dilution	WB 1:500-2000
Concentration	1 mg/ml
Purity	≥90%
Storage Stability	-20°C/1 year
Synonyms	
Observed Band	45kD
Cell Pathway	Secreted .
Tissue Specificity	Expressed in visceral adipose tissues.
Function	function:May modulates insulin action conceivably only in the presence of its yet undefined target proteases in white adipose tissues.,similarity:Belongs to the serpin family.,tissue specificity:Expressed in visceral adipose tissues.,
Background	function:May modulates insulin action conceivably only in the presence of its yet undefined target proteases in white adipose tissues.,similarity:Belongs to the serpin family.,tissue specificity:Expressed in visceral adipose tissues.,
matters needing attention	Avoid repeated freezing and thawing!

Nanjing BYabscience technology Co.,Ltd

网址: www.njbybio.com

官方热线: 025-5229-8998

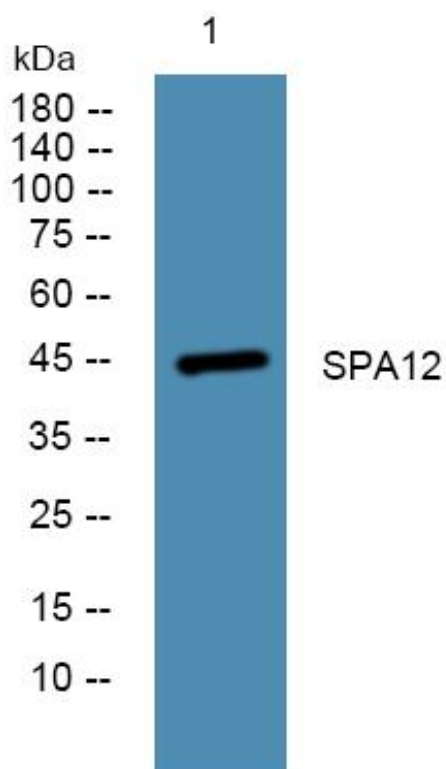
监督电话: 15950492658



Usage suggestions

This product can be used in immunological reaction related experiments. For more information, please consult technical personnel.

Products Images



Western Blot analysis of various cells using SPA12 Monoclonal Antibody

Nanjing BYabscience technology Co.,Ltd

网址: www.njbybio.com

官方热线: 025-5229-8998

监督电话: 15950492658