



# SGK2 Monoclonal Antibody

Catalog No	BYmab-06139
Isotype	IgG
Reactivity	Human;Rat;Mouse
Applications	WB
Gene Name	SGK2
Protein Name	Serine/threonine-protein kinase Sgk2 (EC 2.7.11.1) (Serum/glucocorticoid-regulated kinase 2)
Immunogen	Synthesized peptide derived from part region of human protein
Specificity	SGK2 Monoclonal Antibody detects endogenous levels of protein.
Formulation	Liquid in PBS containing 50% glycerol, and 0.02% sodium azide.
Source	Monoclonal, Mouse,IgG
Purification	The antibody was affinity-purified from mouse antiserum by affinity-chromatography using epitope-specific immunogen.
Dilution	WB 1:500-2000
Concentration	1 mg/ml
Purity	≥90%
Storage Stability	-20°C/1 year
Synonyms	
Observed Band	46kD
Cell Pathway	Cytoplasm . Nucleus .
Tissue Specificity	Highly expressed in liver, kidney and pancreas, and at lower levels in brain.
Function	catalytic activity:ATP + a protein = ADP + a phosphoprotein.,caution:Not regulated by serum or glucocorticoids.,enzyme regulation:Two specific sites, one in the kinase domain (Thr-253) and the other in the C-terminal regulatory region (Ser-416), need to be phosphorylated for its full activation.,function:Involved in the activation of potassium channels.,similarity:Belongs to the protein kinase superfamily.,similarity:Belongs to the protein kinase superfamily. AGC Ser/Thr protein kinase family.,similarity:Contains 1 AGC-kinase C-terminal domain.,similarity:Contains 1 protein kinase domain.,tissue specificity:Highly expressed in liver, kidney and pancreas, and at lower levels in brain.,
Background	This gene encodes a serine/threonine protein kinase. Although this gene product is similar to serum- and glucocorticoid-induced protein kinase (SGK), this gene is

Nanjing BYabscience technology Co.,Ltd



not induced by serum or glucocorticoids. This gene is induced in response to signals that activate phosphatidylinositol 3-kinase, which is also true for SGK. Alternative splicing results in multiple transcript variants. [provided by RefSeq, Nov 2010],

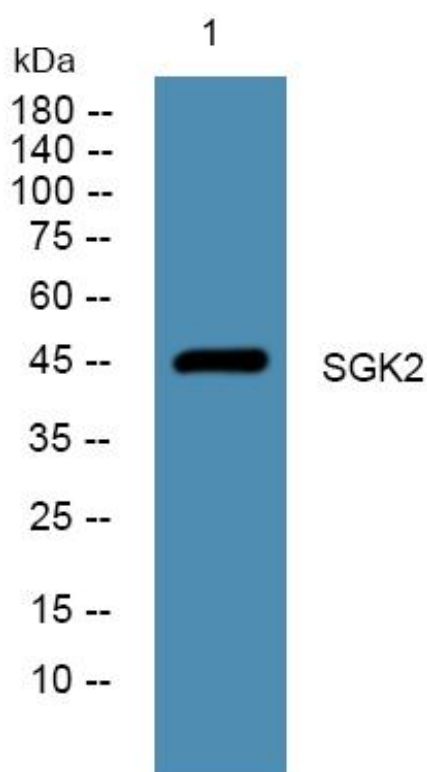
**matters needing attention**

Avoid repeated freezing and thawing!

**Usage suggestions**

This product can be used in immunological reaction related experiments. For more information, please consult technical personnel.

## Products Images



Western Blot analysis of various cells using SGK2 Monoclonal Antibody