



SBK1 Monoclonal Antibody

Catalog No	BYmab-06138
Isotype	IgG
Reactivity	Human;Rat;Mouse
Applications	WB
Gene Name	SBK1
Protein Name	Serine/threonine-protein kinase SBK1 (EC 2.7.11.1) (SH3-binding kinase 1)
Immunogen	Synthesized peptide derived from part region of human protein
Specificity	SBK1 Monoclonal Antibody detects endogenous levels of protein.
Formulation	Liquid in PBS containing 50% glycerol, and 0.02% sodium azide.
Source	Monoclonal, Mouse,IgG
Purification	The antibody was affinity-purified from mouse antiserum by affinity-chromatography using epitope-specific immunogen.
Dilution	WB 1:500-2000
Concentration	1 mg/ml
Purity	≥90%
Storage Stability	-20°C/1 year
Synonyms	
Observed Band	46kD
Cell Pathway	Cytoplasm .
Tissue Specificity	Epithelium,
Function	catalytic activity:ATP + a protein = ADP + a phosphoprotein.,function:May be involved in signal-transduction pathways related to the control of brain development.,similarity:Belongs to the protein kinase superfamily. Ser/Thr protein kinase family.,similarity:Contains 1 protein kinase domain.,
Background	catalytic activity:ATP + a protein = ADP + a phosphoprotein.,function:May be involved in signal-transduction pathways related to the control of brain development.,similarity:Belongs to the protein kinase superfamily. Ser/Thr protein kinase family.,similarity:Contains 1 protein kinase domain.,
matters needing attention	Avoid repeated freezing and thawing!

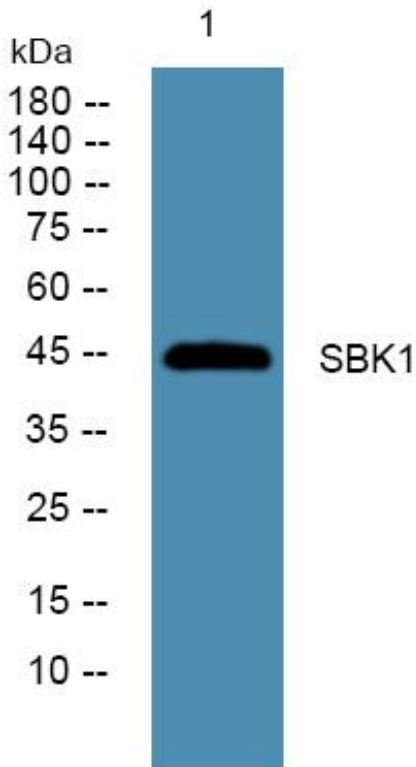
Nanjing BYabscience technology Co.,Ltd



Usage suggestions

This product can be used in immunological reaction related experiments. For more information, please consult technical personnel.

Products Images



Western Blot analysis of various cells using SBK1 Monoclonal Antibody

Nanjing BYabs science technology Co.,Ltd

网址: www.njbybio.com

官方热线: 025-5229-8998

监督电话: 15950492658