



# PRS23 Monoclonal Antibody

Catalog No	BYmab-06123
Isotype	IgG
Reactivity	Human;Rat;Mouse
Applications	WB
Gene Name	PRSS23 ZSIG13 UNQ270/PRO307
Protein Name	Serine protease 23 (EC 3.4.21.-) (Putative secreted protein Zsig13)
Immunogen	Synthesized peptide derived from human protein . at AA range: 150-230
Specificity	PRS23 Monoclonal Antibody detects endogenous levels of protein.
Formulation	Liquid in PBS containing 50% glycerol, and 0.02% sodium azide.
Source	Monoclonal, Mouse,IgG
Purification	The antibody was affinity-purified from mouse antiserum by affinity-chromatography using epitope-specific immunogen.
Dilution	WB 1:500-2000
Concentration	1 mg/ml
Purity	≥90%
Storage Stability	-20°C/1 year
Synonyms	
Observed Band	42kD
Cell Pathway	Secreted .
Tissue Specificity	Cervix,Umbilical vein,Uterus,
Function	similarity:Belongs to the peptidase S1 family.,
Background	This gene encodes a conserved member of the trypsin family of serine proteases. Mouse studies found a decrease of mRNA levels of this gene after ovulation was induced. Alternative splicing results in multiple transcript variants. [provided by RefSeq, Jun 2014],
matters needing attention	Avoid repeated freezing and thawing!

Nanjing BYabscience technology Co.,Ltd

网址: [www.njbybio.com](http://www.njbybio.com)

官方热线: 025-5229-8998

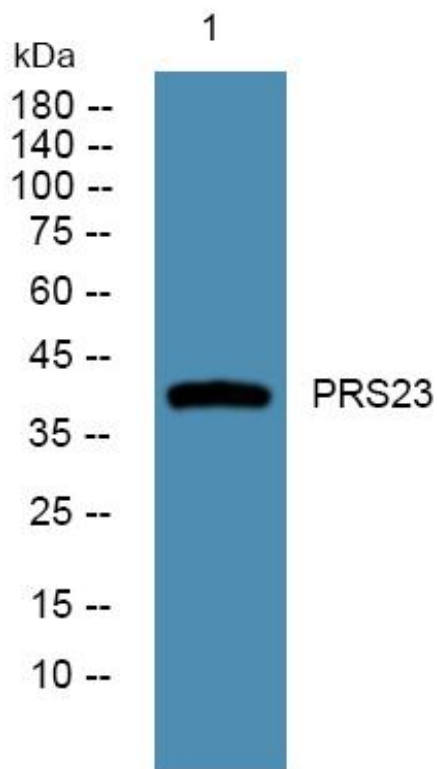
监督电话: 15950492658



### Usage suggestions

This product can be used in immunological reaction related experiments. For more information, please consult technical personnel.

## Products Images



Western Blot analysis of various cells using PRS23 Monoclonal Antibody

Nanjing BYabs science technology Co.,Ltd

网址: [www.njbybio.com](http://www.njbybio.com)

官方热线: 025-5229-8998

监督电话: 15950492658