



RL22L Monoclonal Antibody

Catalog No	BYmab-06106
Isotype	IgG
Reactivity	Human;Mouse
Applications	WB
Gene Name	RPL22L1
Protein Name	60S ribosomal protein L22-like 1
Immunogen	Synthesized peptide derived from human protein . at AA range: 30-110
Specificity	RL22L Monoclonal Antibody detects endogenous levels of protein.
Formulation	Liquid in PBS containing 50% glycerol, and 0.02% sodium azide.
Source	Monoclonal, Mouse,IgG
Purification	The antibody was affinity-purified from mouse antiserum by affinity-chromatography using epitope-specific immunogen.
Dilution	WB 1:500-2000
Concentration	1 mg/ml
Purity	≥90%
Storage Stability	-20°C/1 year
Synonyms	
Observed Band	13kD
Cell Pathway	ribosome,cytosolic large ribosomal subunit,
Tissue Specificity	Testis,Uterus,
Function	similarity:Belongs to the ribosomal protein L22e family.,
Background	similarity:Belongs to the ribosomal protein L22e family.,
matters needing attention	Avoid repeated freezing and thawing!
Usage suggestions	This product can be used in immunological reaction related experiments. For more information, please consult technical personnel.

Nanjing BYabscience technology Co.,Ltd

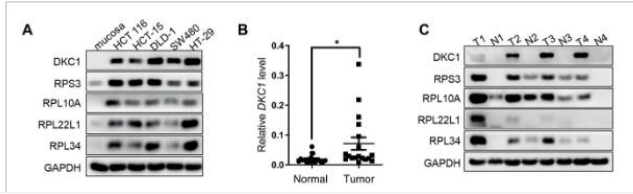
网址: www.njbybio.com

官方热线: 025-5229-8998

监督电话: 15950492658



Products Images



Western Blot analysis of various cells using RL22L Monoclonal Antibody