



RHOQ Monoclonal Antibody

Catalog No	BYmab-06102
Isotype	IgG
Reactivity	Human;Mouse;Rat
Applications	WB
Gene Name	RHOQ ARHQ RASL7A TC10
Protein Name	Rho-related GTP-binding protein RhoQ (Ras-like protein TC10) (Ras-like protein family member 7A)
Immunogen	Synthesized peptide derived from human protein . at AA range: 60-140
Specificity	RHOQ Monoclonal Antibody detects endogenous levels of protein.
Formulation	Liquid in PBS containing 50% glycerol, and 0.02% sodium azide.
Source	Monoclonal, Mouse,IgG
Purification	The antibody was affinity-purified from mouse antiserum by affinity-chromatography using epitope-specific immunogen.
Dilution	WB 1:500-2000
Concentration	1 mg/ml
Purity	≥90%
Storage Stability	-20°C/1 year
Synonyms	
Observed Band	22kD
Cell Pathway	Cytoplasm . Cell membrane ; Lipid-anchor .
Tissue Specificity	Brain,Embryo,Lung,Skin,
Function	enzyme regulation:Regulated by guanine nucleotide exchange factors (GEFs) which promote the exchange of bound GDP for free GTP, GTPase activating proteins (GAPs) which increase the GTP hydrolysis activity, and GDP dissociation inhibitors which inhibit the dissociation of the nucleotide from the GTPase.,function:Plasma membrane-associated small GTPase which cycles between an active GTP-bound and an inactive GDP-bound state. In active state binds to a variety of effector proteins to regulate cellular responses. Involved in epithelial cell polarization processes. May play a role in CFTR trafficking to the plasma membrane. Causes the formation of thin, actin-rich surface projections called filopodia.,PTM:May be post-translationally modified by both palmitoylation and polyisoprenylation.,similarity:Belongs to the small GTPase superfamily. Rho family.,subunit:Interacts with CDC42EP4 in a GTP-d

Nanjing BYabscience technology Co.,Ltd



Background

This gene encodes a member of the Rho family of small GTPases, which cycle between inactive GDP-bound and active GTP-bound states and function as molecular switches in signal transduction cascades. Rho proteins promote reorganization of the actin cytoskeleton and regulate cell shape, attachment, and motility. The encoded protein is an important signalling protein for sarcomere assembly and has been shown to play a significant role in the exocytosis of the solute carrier family 2, facilitated glucose transporter member 4 and other proteins, possibly acting as the signal that turns on the membrane fusion machinery. Three related pseudogene have been identified on chromosomes 2 and 14. [provided by RefSeq, Aug 2011],

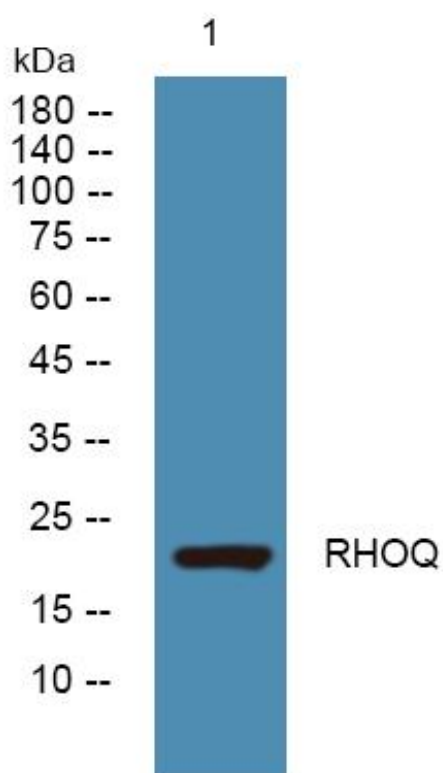
matters needing attention

Avoid repeated freezing and thawing!

Usage suggestions

This product can be used in immunological reaction related experiments. For more information, please consult technical personnel.

Products Images



Western Blot analysis of various cells using RHOQ Monoclonal Antibody

Nanjing BYabscience technology Co.,Ltd

网址: www.njbybio.com

官方热线: 025-5229-8998

监督电话: 15950492658