



# RHOJ Monoclonal Antibody

Catalog No	BYmab-06100
Isotype	IgG
Reactivity	Human;Mouse
Applications	WB
Gene Name	RHOJ ARHJ RASL7B RHOI TCL
Protein Name	Rho-related GTP-binding protein RhoJ (Ras-like protein family member 7B) (Tc10-like GTP-binding protein)
Immunogen	Synthesized peptide derived from human protein . at AA range: 30-110
Specificity	RHOJ Monoclonal Antibody detects endogenous levels of protein.
Formulation	Liquid in PBS containing 50% glycerol, and 0.02% sodium azide.
Source	Monoclonal, Mouse,IgG
Purification	The antibody was affinity-purified from mouse antiserum by affinity-chromatography using epitope-specific immunogen.
Dilution	WB 1:500-2000
Concentration	1 mg/ml
Purity	≥90%
Storage Stability	-20°C/1 year
Synonyms	
Observed Band	23kD
Cell Pathway	Cell membrane ; Lipid-anchor ; Cytoplasmic side . Localization to the plasma membrane is regulated by GLUL. .
Tissue Specificity	Specifically expressed in endothelial cells in different tissues, such as brain, heart, lung and liver.
Function	function:GTP-binding protein with GTPase activity. Elicits the formation of F-actin-rich structures in fibroblasts and is involved in the regulation of cell morphology.,similarity:Belongs to the small GTPase superfamily. Rho family.,subunit:Interacts with the CRIB domains of proteins such as Pak1 and Was/Wasp.,
Background	This gene encodes one of the many small GTP-binding proteins in the Rho family shown to be associated with focal adhesions in endothelial cells (PMID: 21148427, 22103495). The encoded protein is activated by vascular endothelial growth factor and may regulate angiogenesis. [provided by RefSeq, Dec 2011],

Nanjing BYabscience technology Co.,Ltd

网址: [www.njbybio.com](http://www.njbybio.com)

官方热线: 025-5229-8998

监督电话: 15950492658



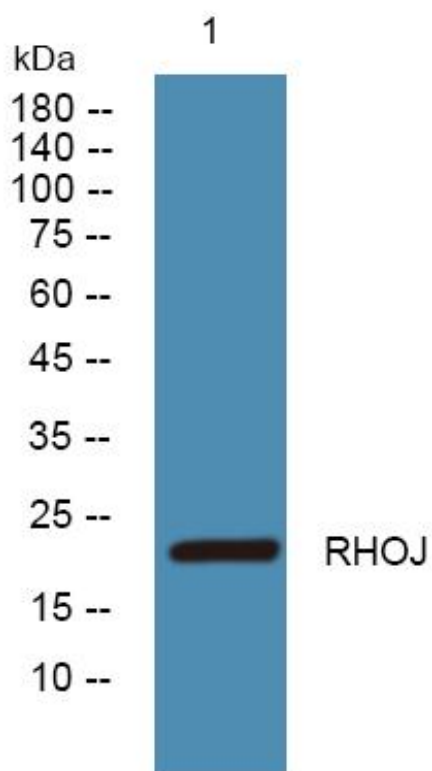
**matters needing attention**

Avoid repeated freezing and thawing!

**Usage suggestions**

This product can be used in immunological reaction related experiments. For more information, please consult technical personnel.

## Products Images



Western Blot analysis of various cells using RHOJ Monoclonal Antibody