



# RFPL1 Monoclonal Antibody

|                                  |  |
|----------------------------------|--|
| <b>Catalog No</b>                | BYmab-06078  |
| <b>Isotype</b>                   | IgG  |
| <b>Reactivity</b>                | Human;Rat;Mouse;   |
| <b>Applications</b>              | WB   |
| <b>Gene Name</b>                 | RFPL1 RFPL1L RNF78   |
| <b>Protein Name</b>              | Ret finger protein-like 1 (RING finger protein 78)   |
| <b>Immunogen</b>                 | Synthesized peptide derived from human protein . at AA range: 160-240  |
| <b>Specificity</b>               | RFPL1 Monoclonal Antibody detects endogenous levels of protein.  |
| <b>Formulation</b>               | Liquid in PBS containing 50% glycerol, and 0.02% sodium azide.   |
| <b>Source</b>                    | Monoclonal, Mouse,IgG  |
| <b>Purification</b>              | The antibody was affinity-purified from mouse antiserum by affinity-chromatography using epitope-specific immunogen.   |
| <b>Dilution</b>                  | WB 1:500-2000  |
| <b>Concentration</b>             | 1 mg/ml  |
| <b>Purity</b>                    | ≥90%   |
| <b>Storage Stability</b>         | -20°C/1 year   |
| <b>Synonyms</b>                  |  |
| <b>Observed Band</b>             | 34kD   |
| <b>Cell Pathway</b>              | Cytoplasm . Nucleus . A higher concentration is observed in the cytoplasm compared to the nucleus. .   |
| <b>Tissue Specificity</b>        | Seems to be expressed in prostate and less abundantly in adult brain, fetal liver, and fetal kidney.   |
| <b>Function</b>                  | similarity:Contains 1 B30.2/SPRY domain.,similarity:Contains 1 RING-type zinc finger.,tissue specificity:Seems to be expressed in prostate and less abundantly in adult brain, fetal liver, and fetal kidney., |
| <b>Background</b>                | similarity:Contains 1 B30.2/SPRY domain.,similarity:Contains 1 RING-type zinc finger.,tissue specificity:Seems to be expressed in prostate and less abundantly in adult brain, fetal liver, and fetal kidney., |
| <b>matters needing attention</b> | Avoid repeated freezing and thawing!   |

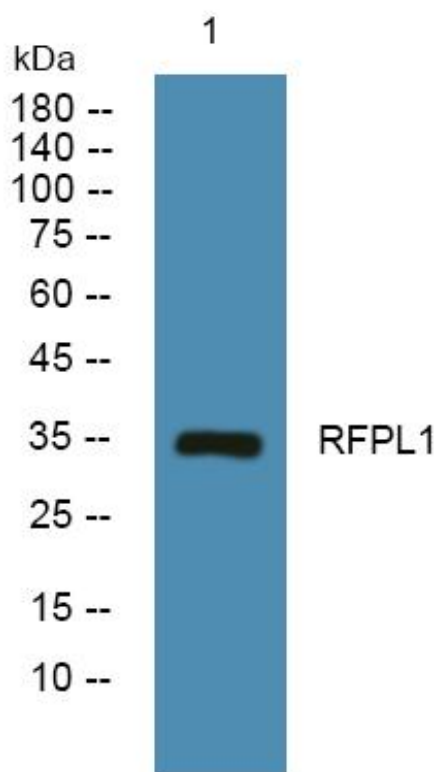
**Nanjing BYabscience technology Co.,Ltd**



### Usage suggestions

This product can be used in immunological reaction related experiments. For more information, please consult technical personnel.

## Products Images



Western Blot analysis of various cells using RFPL1 Monoclonal Antibody