



# RGS21 Monoclonal Antibody

Catalog No	BYmab-06074
Isotype	IgG
Reactivity	Human;Rat;Mouse;
Applications	WB
Gene Name	RGS21
Protein Name	Regulator of G-protein signaling 21 (RGS21)
Immunogen	Synthesized peptide derived from human protein . at AA range: 10-90
Specificity	RGS21 Monoclonal Antibody detects endogenous levels of protein.
Formulation	Liquid in PBS containing 50% glycerol, and 0.02% sodium azide.
Source	Monoclonal, Mouse,IgG
Purification	The antibody was affinity-purified from mouse antiserum by affinity-chromatography using epitope-specific immunogen.
Dilution	WB 1:500-2000
Concentration	1 mg/ml
Purity	≥90%
Storage Stability	-20°C/1 year
Synonyms	
Observed Band	16kD
Cell Pathway	cytoplasm,plasma membrane,
Tissue Specificity	Expressed ubiquitously.
Function	function:Inhibits signal transduction by increasing the GTPase activity of G protein alpha subunits thereby driving them into their inactive GDP-bound form.,similarity:Contains 1 RGS domain.,tissue specificity:Expressed ubiquitously.,
Background	Regulator of G protein signaling (RGS) proteins are regulatory and structural components of G protein-coupled receptor complexes. RGS proteins are GTPase-activating proteins for Gi (see GNAI1; MIM 139310) and Gq (see GNAQ; MIM 600998) class G-alpha proteins. They accelerate transit through the cycle of GTP binding and hydrolysis and thereby accelerate signaling kinetics and termination.[supplied by OMIM, Nov 2008],

Nanjing BYabscience technology Co.,Ltd



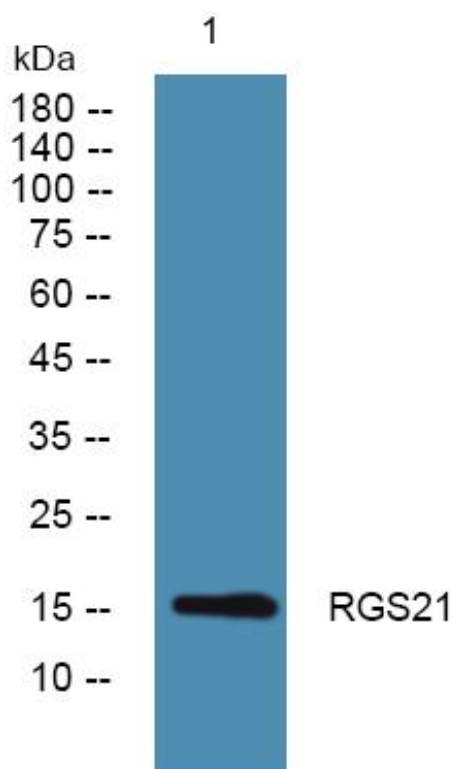
**matters needing attention**

Avoid repeated freezing and thawing!

**Usage suggestions**

This product can be used in immunological reaction related experiments. For more information, please consult technical personnel.

## Products Images



Western Blot analysis of various cells using RGS21 Monoclonal Antibody