



RAB8A Monoclonal Antibody

Catalog No	BYmab-06058
Isotype	IgG
Reactivity	Human;Mouse;Rat
Applications	WB
Gene Name	RAB8A MEL RAB8
Protein Name	Ras-related protein Rab-8A (Oncogene c-mel)
Immunogen	Synthesized peptide derived from human protein . at AA range: 120-200
Specificity	RAB8A Monoclonal Antibody detects endogenous levels of protein.
Formulation	Liquid in PBS containing 50% glycerol, and 0.02% sodium azide.
Source	Monoclonal, Mouse,IgG
Purification	The antibody was affinity-purified from mouse antiserum by affinity-chromatography using epitope-specific immunogen.
Dilution	WB 1:500-2000
Concentration	1 mg/ml
Purity	≥90%
Storage Stability	-20°C/1 year
Synonyms	
Observed Band	22kD
Cell Pathway	Cell membrane ; Lipid-anchor ; Cytoplasmic side . Golgi apparatus . Recycling endosome membrane . Cell projection, cilium . Cytoplasmic vesicle, phagosome . Cytoplasmic vesicle, phagosome membrane ; Lipid-anchor ; Cytoplasmic side . Cytoplasm, cytoskeleton, microtubule organizing center, centrosome, centriole . Cytoplasm, cytoskeleton, cilium basal body . Midbody . Cytoplasm . Cytoplasm, cytoskeleton, cilium axoneme . Colocalizes with OPTN at the Golgi complex and in vesicular structures close to the plasma membrane (PubMed:15837803). In the GDP-bound form, present in the perinuclear region (PubMed:12221131). Shows a polarized distribution to distal regions of cell protrusions in the GTP-bound form (PubMed:12221131). Colocalizes with PARD3, PRKCI, EXOC5, OCLN, PODXL and RAB11A in apical me
Tissue Specificity	Brain,Epithelium,Platelet,Skin,
Function	function:May be involved in vesicular trafficking and neurotransmitter release.,similarity:Belongs to the small GTPase superfamily. Rab family.,subunit:Interacts with MAP4K2 and SYTL4. Interacts with SGSM1 and

Nanjing BYabscience technology Co.,Ltd



SGSM3.,

Background

The protein encoded by this gene is a member of the RAS superfamily which are small GTP/GDP-binding proteins with an average size of 200 amino acids. The RAS-related proteins of the RAB/YPT family may play a role in the transport of proteins from the endoplasmic reticulum to the Golgi and the plasma membrane. This protein shares 97%, 96%, and 51% similarity with the dog RAB8, mouse MEL, and mouse YPT1 proteins, respectively and contains the 4 GTP/GDP-binding sites that are present in all the RAS proteins. The putative effector-binding site of this protein is similar to that of the RAB/YPT proteins. However, this protein contains a C-terminal CAAX motif that is characteristic of many RAS superfamily members but which is not found in YPT1 and the majority of RAB proteins. Although this gene was isolated as a transforming gene from a melanoma cell line, no linkage between MEL and malign

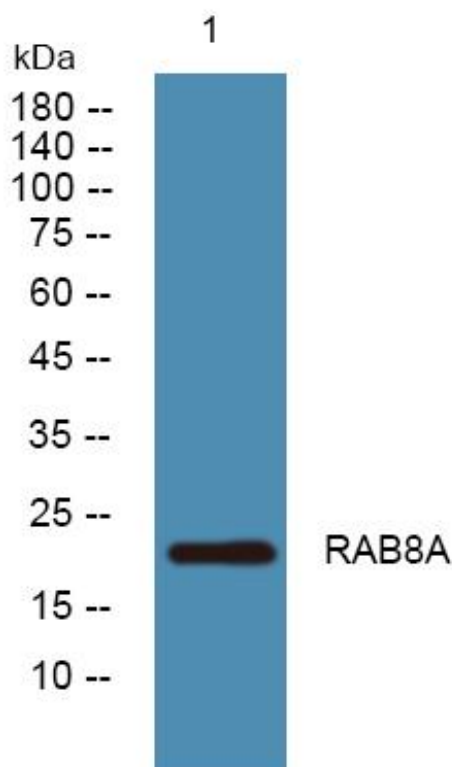
matters needing attention

Avoid repeated freezing and thawing!

Usage suggestions

This product can be used in immunological reaction related experiments. For more information, please consult technical personnel.

Products Images



Western Blot analysis of various cells using RAB8A Monoclonal Antibody

Nanjing BYabscience technology Co.,Ltd