



RB40C Monoclonal Antibody

Catalog No	BYmab-06054
Isotype	IgG
Reactivity	Human;Mouse
Applications	WB
Gene Name	RAB40C RARL RASL8C
Protein Name	Ras-related protein Rab-40C (Rar-like protein) (Ras-like protein family member 8C) (SOCS box-containing protein RAR3)
Immunogen	Synthesized peptide derived from human protein . at AA range: 50-130
Specificity	RB40C Monoclonal Antibody detects endogenous levels of protein.
Formulation	Liquid in PBS containing 50% glycerol, and 0.02% sodium azide.
Source	Monoclonal, Mouse,IgG
Purification	The antibody was affinity-purified from mouse antiserum by affinity-chromatography using epitope-specific immunogen.
Dilution	WB 1:500-2000
Concentration	1 mg/ml
Purity	≥90%
Storage Stability	-20°C/1 year
Synonyms	
Observed Band	30kD
Cell Pathway	Cell membrane ; Lipid-anchor ; Cytoplasmic side .
Tissue Specificity	Brain,Testis,
Function	domain:The SOCS box domain mediates the interaction with the Elongin BC complex, an adapter module in different E3 ubiquitin ligase complexes.,function:Probable substrate-recognition component of a SCF-like ECS (Elongin-Cullin-SOCS-box protein) E3 ubiquitin ligase complex which mediates the ubiquitination and subsequent proteasomal degradation of target proteins.,pathway:Protein modification; protein ubiquitination.,similarity:Belongs to the small GTPase superfamily. Rab family.,similarity:Contains 1 SOCS box domain.,subunit:Component of the probable SCF-like ECS(RAB40C) E3 ubiquitin-protein ligase complex which contains CUL5, RNF7/RBX2, Elongin BC complex and RAB40C. Interacts with CUL5, RNF7, TCEB1 and TCEB2.,

Nanjing BYabscience technology Co.,Ltd



Background

domain:The SOCS box domain mediates the interaction with the Elongin BC complex, an adapter module in different E3 ubiquitin ligase complexes.,function:Probable substrate-recognition component of a SCF-like ECS (Elongin-Cullin-SOCS-box protein) E3 ubiquitin ligase complex which mediates the ubiquitination and subsequent proteasomal degradation of target proteins.,pathway:Protein modification; protein ubiquitination.,similarity:Belongs to the small GTPase superfamily. Rab family.,similarity:Contains 1 SOCS box domain.,subunit:Component of the probable SCF-like ECS(RAB40C) E3 ubiquitin-protein ligase complex which contains CUL5, RNF7/RBX2, Elongin BC complex and RAB40C. Interacts with CUL5, RNF7, TCEB1 and TCEB2.,

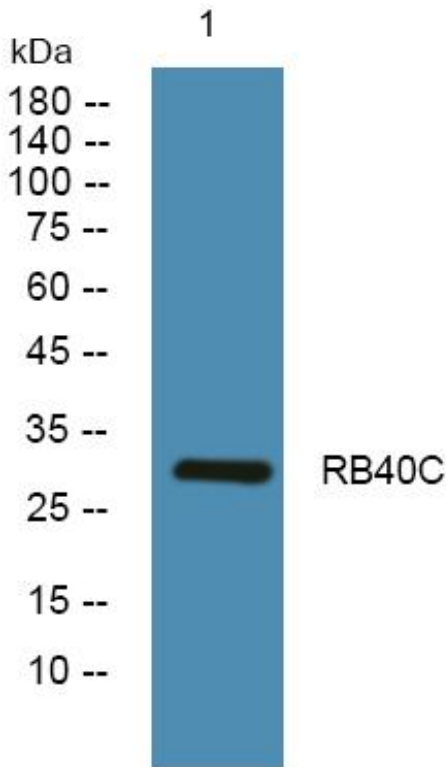
matters needing attention

Avoid repeated freezing and thawing!

Usage suggestions

This product can be used in immunological reaction related experiments. For more information, please consult technical personnel.

Products Images



Western Blot analysis of various cells using RB40C Monoclonal Antibody